

- Minutes:** Minutes of the Meeting of the Maules Creek Coal Community Consultative Committee held on **Thursday 15 May 2025** at the Boggabri Golf Club commencing at 11.30 am.
- Members Present:** Elizabeth O’Hara (EOH) – Community Representative, Robyn Grover (RG) – Community Representative, Steve Eather (SE) – Community Representative, Libby Laird (LL) – Community Representative, Cr Brett Dickinson (BD) – Narrabri Shire Council, Emma Bulkeley (EB) – WHC, Darren Swain (DS) – WHC, Jorge Moraga (JM) – General Manager, Maules Creek Operations.
- Apologies:** Cr Darrell Tiemens (DT) – Narrabri Shire Council, Jabin de Keizer (JdeK) – WHC.
- Observers:** Roselyn Druce (RD) – Maules Creek Community.
- Independent Chair:** Michael J. Silver OAM (MJS)

Agenda Item	Discussion	Action/By Whom
1.	<b>Welcome and Apologies</b> – MJS welcomed everyone to the meeting.	
2.	<b>Acknowledgement of Country</b> - The Chair acknowledged the Traditional Owners of the land on which the meeting is being held and their continuing connection to land, water, and culture, paying respects to their Elders past, present and emerging.	
3.	<b>Declaration of Pecuniary or Other Interests</b> – EOH holds a small quantity of Whitehaven shares. RG has a family member working at Maules Creek Coal Mine. MJS expenses as chair are borne by the Proponent.	
4.	<b>Minutes of the Previous Meeting</b> – The minutes of the meeting of 13 February 2025 were approved on 24 March 2025.	
5.	<b>Business Arising from the Previous Minutes</b> LL expressed concern regarding integration of members questions and requests into the minutes suggesting that a question and response appendix would be more appropriate. MJS disagreed, indicating that it was important that the relevance of the question to the context of the matter being discussed was understood. EOH also questioned the appropriateness of “Chair’s notes”. MJS advised that the minutes were consistent with the requirements of the Community Consultative Committee Guidelines and should there be concerns these be taken up with the Department of Planning Housing and Infrastructure.	
6.	<b>Actions</b> <i>Chair’s note: Verbal responses provided by Proponent at the meeting with written responses supplied after the meeting.</i> 6.1 EB to advise the water bore that engaged in the standing water level spike in September 2024. <i>Response: The Bore Reg 13 is located on the Velyama property. It is believed that the groundwater consultants have made a transcription error when reporting on the depth measured at this bore. This is supported by the rapid recovery during the subsequent monitoring period.</i> 6.2 EB to ensure that on all future maps of the mine environs presented to the CCC that property names are noted on the maps. <i>Response: A map identifying the WHC owned properties has been provided and will be included in the slide pack going forward, however individual maps will not have the properties identified. Refer Slide 10.</i> 6.3 EB to check whether a property sale in the area was to Whitehaven. EOH advised that at the Boggabri Community Consultative Committee meeting it had been suggested that it related to a property acquisition (unconfirmed) by Boggabri Coal from Whitehaven. <i>Response: Please advise the name of the property in question.</i> 6.4 EB to provide detail on the depth of the highwall and associated dimensions of the proposed final void relative to current approved void. <i>Response: In accordance with the approved EIS “a void will remain at the north-eastern extent of the mine footprint, with an area of approximately 350 hectares.”</i>	

	<p>LL requested detail on the scale and depth of the current void. EB took the matter on notice.</p> <p>6.5 EB to provide area to be cleared of vegetation associated with the Continuation Project.  <b>Response: Continuation is still in the conceptual phase and this information is not yet available.</b></p> <p>LL questioned when will the concept phase end and there will be certainty regarding the extent of clearing. EB responded, when the proposed project is determined by DPHI. DS added that the project needs to be approved before certainty over the extent of clearing can be provided.</p> <p>6.6 MJS to prepare an amended meeting program for the May 2025 CCC meetings.  <b>Response: Revised meeting schedule forwarded to members.</b></p>	<p><b>ACTION:</b> EB to advise the scale and depth of the current void.</p>
7.	<p><b>Correspondence</b></p> <p>Nil</p>	
9.	<p><b>Environmental Monitoring Report</b></p> <p><i>A copy of the Monitoring Report is attached to the minutes.</i></p> <p>The Environmental Monitoring Report was distributed to members prior to the meeting. There were no questions raised in relation to the report.</p>	
10.	<p><b>Proponent's Presentation</b></p> <p><i>EB introduced the Proponent's Presentation. A copy of the presentation is attached to the minutes.</i></p> <p><b>Health and Safety</b></p> <p>The Committee noted the Health and Safety Performance data – Total Recordable Injury Frequency Rate (TRIFR) 0.9. JM explained the Critical Controls associated with the identified hazards and explained the graphs detailing the data. He stated the TRIFR result of 0.9 was exceptional and was the result of a campaign to be vigilant on safety and the need to report incidents and injuries.</p> <p><b>Environmental Monitoring</b></p> <p><b>Depositional Dust</b></p> <p>EB noted that the annual reporting period (12 monthly rolling annual average) remained below the relevant Project Approval criteria.</p> <p><b>HVAS</b></p> <p>EB advised that the High-Volume Air Sampler stayed well below the annual average. The Rolling Annual Average was recorded at 13.4 µg/m<sup>3</sup>, which is below the Annual Average Guideline of 30 µg/m<sup>3</sup>. There were three (3) incidents recorded above the 30 µg/m<sup>3</sup> level.</p> <p><b>TEOM (PM10)</b></p> <p>EM advised that the annual rolling averages for TEOM 1 was 9.3 µg/m<sup>3</sup> whilst TEOM 3's rolling average was 12.2 µg/m<sup>3</sup>. LL enquired as to the use of 'dusticide' in the water used on roads. JM advised that water is used for dust suppression on</p>	

roads and for washing coal. EOH asked how many water carts are used for dust suppression. JM advised that there are six water carts at the mine and generally five (5) carts are operating.

### **Air Quality Monitoring**

The Committee examined the Air Quality Monitoring Rolling 12 months graph, noting that Maules Creek Mine is the bright blue line in the lower section of the graph. EOH noted the spike in late 2024. EM responded that this was due to the Pilliga fires – this issue had been highlighted at previous meetings.

### **Properties Map**

EM presented a map of properties owned by Whitehaven detailing the property names. Refer Action 6.2 above.

### **Groundwater**

The meeting noted the groundwater bore locations on the map. It was noted that there had been a slight decline in bore levels recently although there was little variability over the last 10 years.

### **Standing Water Levels**

EB indicated that standing water levels had remained consistent over the previous 12 months although there had been a spike recorded in February 2025. This appears to be a transcription error – the consultant has been asked to review the recording.

### **Biodiversity Management**

EB reported that the Whitehaven Biodiversity Feral Animal Control program have returned meaningful results.

- 1,378 feral pigs removed from the Maules Biodiversity properties;
- 146 feral goats removed were from the Maules Biodiversity properties;
- 14 hectares of tracks were maintained within Maules Biodiversity properties;

EOH asked where the feral pigs come from. EM explained that feral pigs are very adaptable and can thrive in most environments. Favourable conditions allow feral pigs to reproduce all year round and at a rapid rate. Sows can breed once they reach about 25 kg or six months of age and can potentially produce two litters of 4–10 piglets in a year. DS noted that they generally come from the west of New South Wales during the dry periods and then breed up.

EB also detailed the work undertaken on noxious weed control.

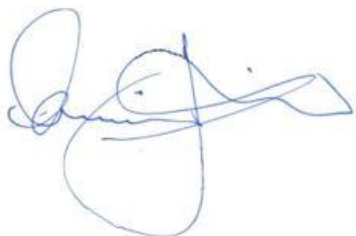
EB outlined the other biodiversity projects and works to be undertaken during 2025 highlighting the 2025 Revegetation Program. BD enquired where the trees are sourced from. EB advised that seeds are collected locally and sent to BioBank Seed in Brisbane for propagation of seedlings. EM also detailed the timing of the Ecological Burn Program.

	<p><b>Continuation Project</b></p> <p><b>MCCP EIS Approval Process</b></p> <p>EB provided an update on the Maules Creek Continuation Project. She stepped the Committee through the status of the process noting that lodgement of the Project Application is proposed at the end of May 2025 with public exhibition expected to commence during June 2025. EM indicated she would advise the CCC when the public exhibition period commences.</p> <p><b>MCC Management Plans</b></p> <p><b>Main Changes</b></p> <p>EM reported that the process of standardising management plans continues. The Aboriginal Cultural Heritage Management Plan is currently awaiting determination whilst the Environmental and Social Impact plans are currently being reviewed.</p> <p>MJS enquired as to the currency of the statistical data to be used in reviewing the Social Impact Management Plan given the differences between what was projected in the original social impact assessment for the mine and the current social and community impact. EM advised the review would take account of the most recent available data.</p> <p><b>Community</b></p> <p><b>Community Investment</b></p> <p>The Committee noted that \$236,378.15 had been delivered by Whitehaven in community donations and sponsorships across NSW. It also noted the regional breakup with Gunnedah Shire (41%), Narrabri Shire (22%) and Tamworth Regional (13%) of distributions. DS indicated that a component of the funding distributions provided funding to Royal Far West and Little Wings to support regional families with specialist needs.</p>	
11.	<p><b>Other Agenda Items</b></p> <p><b>11.1 Annual Review:</b> EOH sought clarification of the availability of the 2024 Annual Review Report. EB responded that the review document had been submitted to DPHI on 31 March 2025. It cannot be placed on the Proponent's website and made available to the public until it is approved by DPHI.</p>	
12.	<p><b>General Business</b></p> <p><b>12.1 High Wall Dams:</b> LL enquired whether all high wall dams had been decommissioned. EB responded that all had been decommissioned in accordance with the Environmental Protection Licence with all clean water return to the environment - the last in late 2024. EOH asked what impact the discharges had had on ground water. EB advised 'nil'. LL asked how much water has been discharged? EB advised that approximately 220 megalitres had been discharged – a link to the environmental report would be provided.</p> <p><b>12.2 Exploration Sites:</b> EOH requested clarification on the location, extent and purpose of exploration drilling undertaken since April 2024. DS explained the several types of drilling undertaken for exploration, such as core</p>	<p><b>ACTION:</b> EB to provide a link to the Environmental Report.</p>

	<p>hole and chip hole. LL noted creation of various access tracks and roads for exploration works. EOH commented that between 10 to 14 sites have been accessed with a suggestion this could be as high as 16. DS responded that exploration works had previously been advised. EOH again called for clarification as to the number of exploration holes drilled and their distribution. EB indicated this information is available in the Forward Plan.</p> <p><b>12.2 Whitehaven Coal Limited v Chief Commissioner of State Revenue:</b> EOH noted the NSW Supreme Court hearing 8-9 April - Whitehaven Coal Limited v Chief Commissioner of State Revenue. Whitehaven and four other associated companies (the Plaintiffs) each hold one or more mining leases under the Mining Act 1992 (NSW). The Plaintiffs lodged an application brought under s 97 [1] of the Taxation Administration Act 1996 (NSW) for a review of decisions of the Chief Commissioner of State Revenue to disallow (in part) their objections to Mineral Royalty Assessment Notices issued by the Chief Commissioner on 2 November 2022. Under the Mining Act, holders of such leases have to render monthly returns and pay royalty to the Crown on publicly owned minerals recovered by the holder under the lease.</p> <p><i>Chair's note: The judgement of the NSW Supreme Court (Equity) was handed down on 16 May 2025. The objections were in part upheld by the Chief Commissioner, remitting a portion of premium interest and penalties imposed on the Plaintiffs.</i></p> <p><i>Refer: <a href="https://www.caselaw.nsw.gov.au/decision/196d1e10e46b5ad30a0b65d2">https://www.caselaw.nsw.gov.au/decision/196d1e10e46b5ad30a0b65d2</a> for complete judgement.</i></p>	<p><b>ACTION:</b> EB to provide the number of exploration holes drilled since April 2024 and their distribution.</p>
<b>13.</b>	<p><b>Next meeting</b></p> <p>The next meeting is scheduled for August 2025. Date TBC.</p>	

Meeting Closed: 12.28 pm.

Approved:



**Michael J. Silver OAM**  
Independent Chair

26 June 2025

## Appendix 1: Actions

Action No.	Description	Date Raised	Page No.	Status
1	MJS to review February 2024 minutes.	15.05.24	2	COMPLETED 24.06.24
2	MJS to respond to R. Druce that the matter needs to be taken up with NSC and the RFS	15.05.24	2	COMPLETED 24.06.24
3	MJS to respond to Mr Laird that there are fundamental issues that need to be addressed.	15.05.24	2	COMPLETED 24.06.24
4	EM to advise how groundwater data is sourced.	15.05.24	3	COMPLETED 26.08.24
5	MJS to contact UNSW regarding availability of ground water data.	15.05.24	3	COMPLETED 16.08.24
6	DS to provide locations of monitoring bores.	15.05.24	4	COMPLETED 26.08.24
7	MJS to discuss environmental representative on the CCC with DPIE	15.05.24	4	COMPLETED 08.08.24
8	MJS to advise DPHI of concerns raised by CCC members regarding the IEA process.	13.11.24	2	ONGOING
9	EB to confirm current locations of TEOM monitors	13.11.24	4	COMPLETED 13.02.24
10	MJS to write to DPHI detailing the potential breach of the conditions of consent in respect of membership of the CCC.	13.11.24	3	COMPLETE 22.11.24
11	JdeK to provide responses to questions on Methane Emissions and Methane Abatement.	13.11.24	6	COMPLETE 16.01.25
12	EB to advise whether there will be forest land clearing in February 2025	13.11.24	7	COMPLETE 13.02.25
13	EB to provide numbers and genus of euthanised fauna during 2024	13.11.24	7	COMPLETE 13.02.25
14	EB to confirm employee transfer numbers from WCC mine to MCC mine	13.11.24	7	COMPLETE 13.02.25
15	EB to advise the water bore that engaged in the standing water level spike in September 2024.	13.02.25	5	COMPLETE 15.05.25
16	EB to ensure that on all future maps of the mine environs presented to the CCC that property names are noted on the maps.	13.02.25	6	COMPLETE 15.05.25

17	EB to check whether a property sale in the area was to Whitehaven.	13.02.05	6	ONGOING
18	EB to provide detail on the depth of the highwall and associated dimensions of the proposed final void relative to current approved void	13.02.25	6	COMPLETE 15.05.25
19	EB to provide area to be cleared of vegetation associated with the Continuation Project.	13.02.25	7	COMPLETE 15.05.25
20	MJS to prepare an amended meeting program for the May CCC meetings.	13.02.25	8	COMPLETE 23.04.25
21	EB to advise the scale and depth of the current void.	15.05.25	2	
22	EB to provide a link to the Environmental Report.	15.05.25	5	
23	EB to provide the number of exploration holes drilled since April 2024 and their distribution.	15.05.25	6	



## Appendix 2: Input from CCC Members for Future Meetings (from October 2023)

Description
Future site tour options: <ul style="list-style-type: none"><li>• Leard Forest Site Tour and presentation.</li><li>• Tour of bores with hydrologist</li></ul>
Provision of Bush Fire Management Plans once revised.
Management of roads and access for fire management
Results of bird surveys
Experts for noise, dust, and water to attend if interest is there
When do the water models get updated?

# Maules Creek Coal Mine

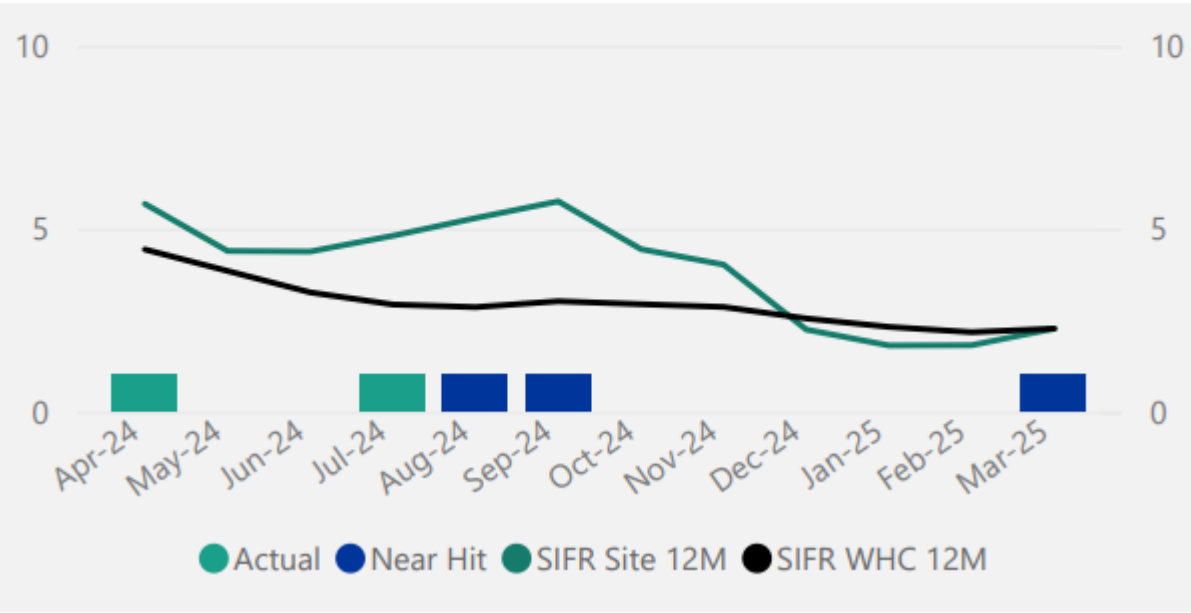
CCC Meeting  
Q1 2025

# MCC Health and Safety Performance

- Total Recordable Injury Frequency Rate (TRIFR) 0.9
- Potential Level 4+ Hazards = 488 FY25
- Critical controls verified 100%

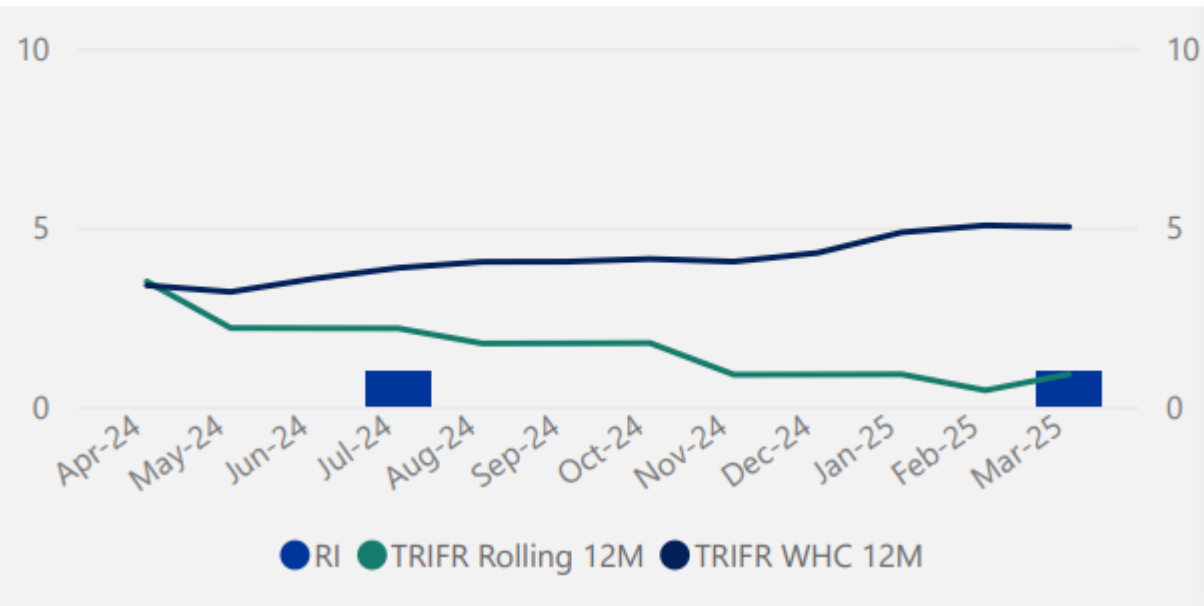
## Significant Incidents (SI)

SIFR (WHC) 12M	SIFR (Site) 12M	SI MTD	SI FYTD
2.3	2.3	1	4



## Total Recordable Injuries Freq Rate (TRIFR)

TRIFR (Site) 12M	TRIFR MTD	TRIFR FYTD
0.9	5.3	1.2



# Environmental Monitoring

Summarised for Q1.

Full detail in the Monitoring Report  
supplied



# Environmental Monitoring

Q1 2025 – Air Quality Monitoring



# Depositional Dust

The annual reporting period (12 monthly rolling annual average) remained below the relevant Project Approval (PA 10\_0138) criteria of 4g/m<sup>2</sup>/month for the respective monitoring points.

MONTH	MC1	MC2	MC3	MC4
January	27.3c	2.4	1.5	1.9
February	6.0c	3.0	2.1	1.6
March	11.6c	1.1	1.6	0.8
12 MONTH ROLLING AVERAGE	0.7	2.2	1.7	1.0

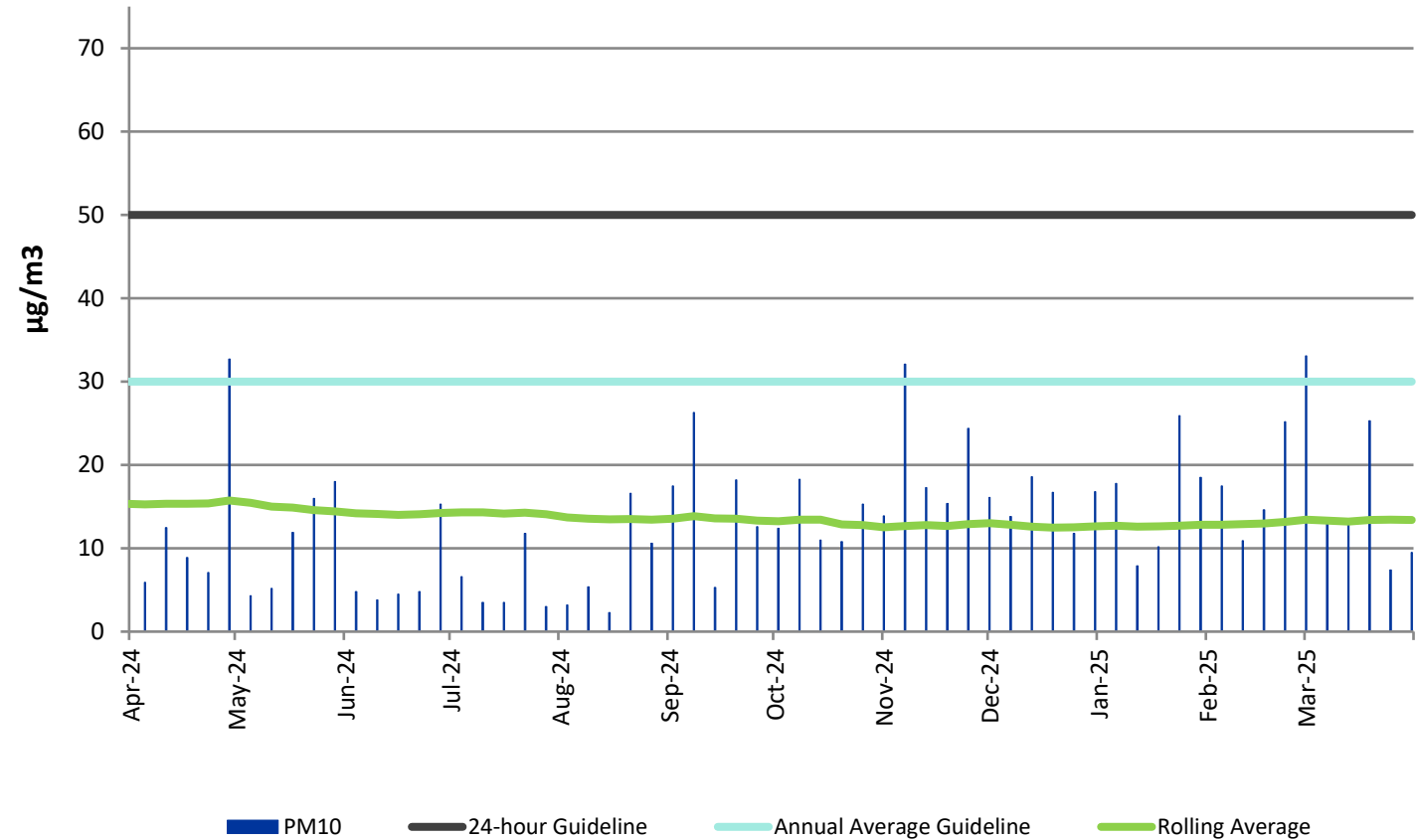
<sup>c</sup> samples contaminated by bird dropping, decomposed insects or vegetable matter.

# HVAS

## High Volume Air Sampler

- The HVAS monitor is located on 'Olivedene'
- Data is publicly available
- No exceedances recorded during the 24-hour average of 50  $\mu\text{g}/\text{m}^3$
- The Rolling Annual Average was recorded at **13.4  $\mu\text{g}/\text{m}^3$** , which is below the Annual Average Guideline of 30  $\mu\text{g}/\text{m}^3$ .

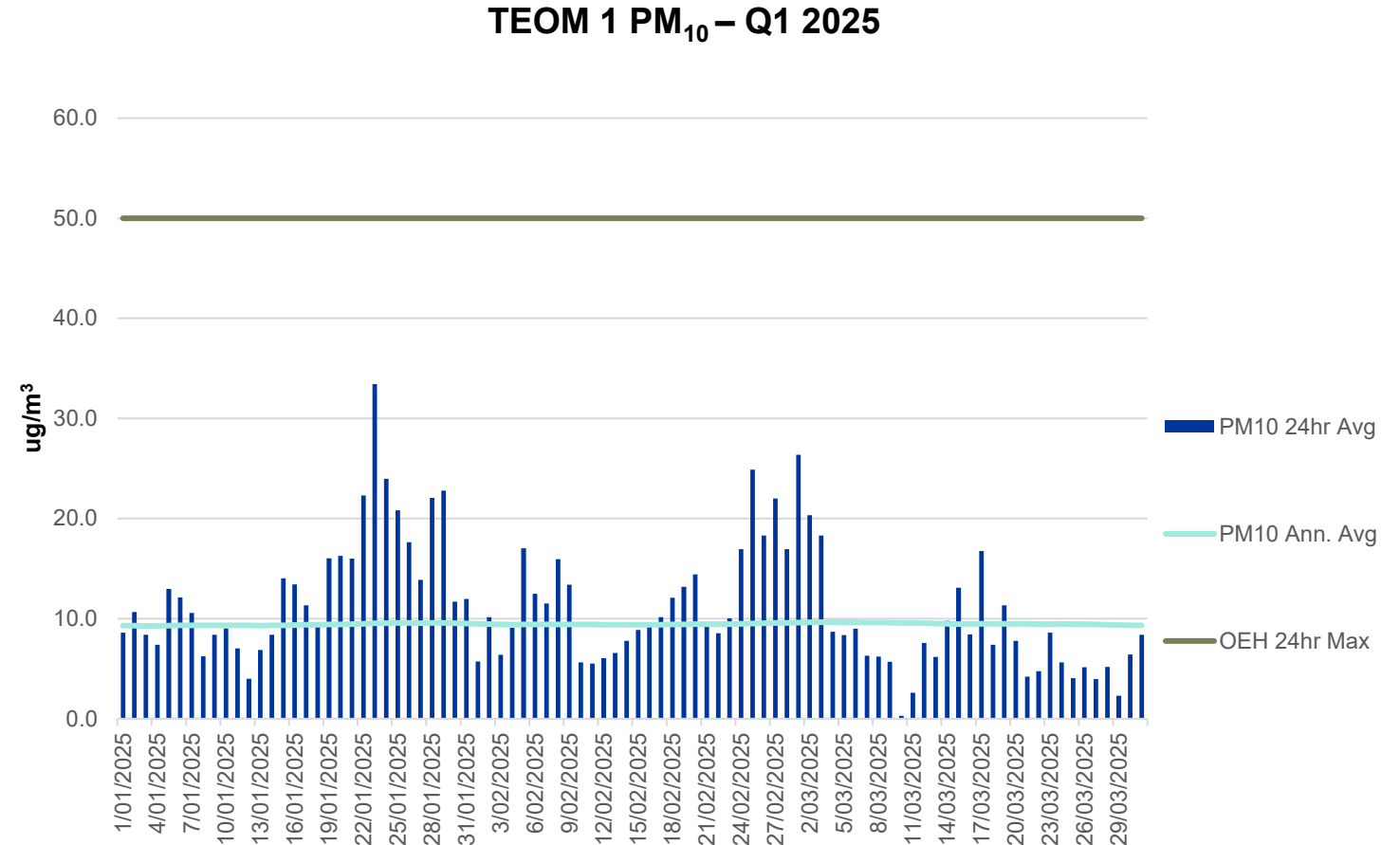
HVAS (PM10) - Olivedene



# TEOM 1 (PM10)

## Tapered element oscillating microbalance

- Publicly available results of TEOM1 available on the EPA website.
- Annual rolling average for TEOM 1 was  $9.3 \mu\text{g}/\text{m}^3$  on the 31<sup>st</sup> of March 2025 (criteria  $30 \mu\text{g}/\text{m}^3$ ).

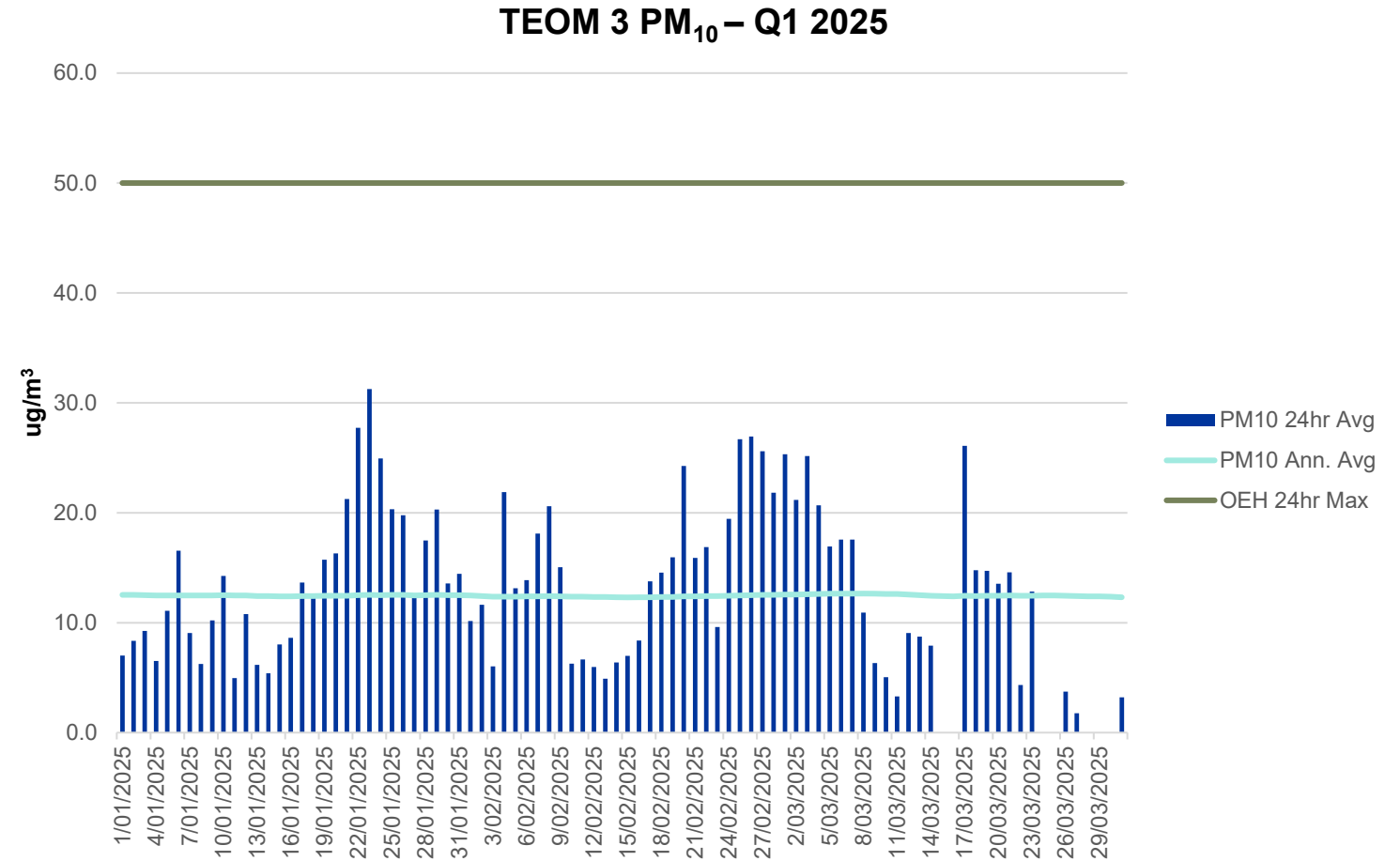




# TEOM 3 (PM10)

## Tapered element oscillating microbalance

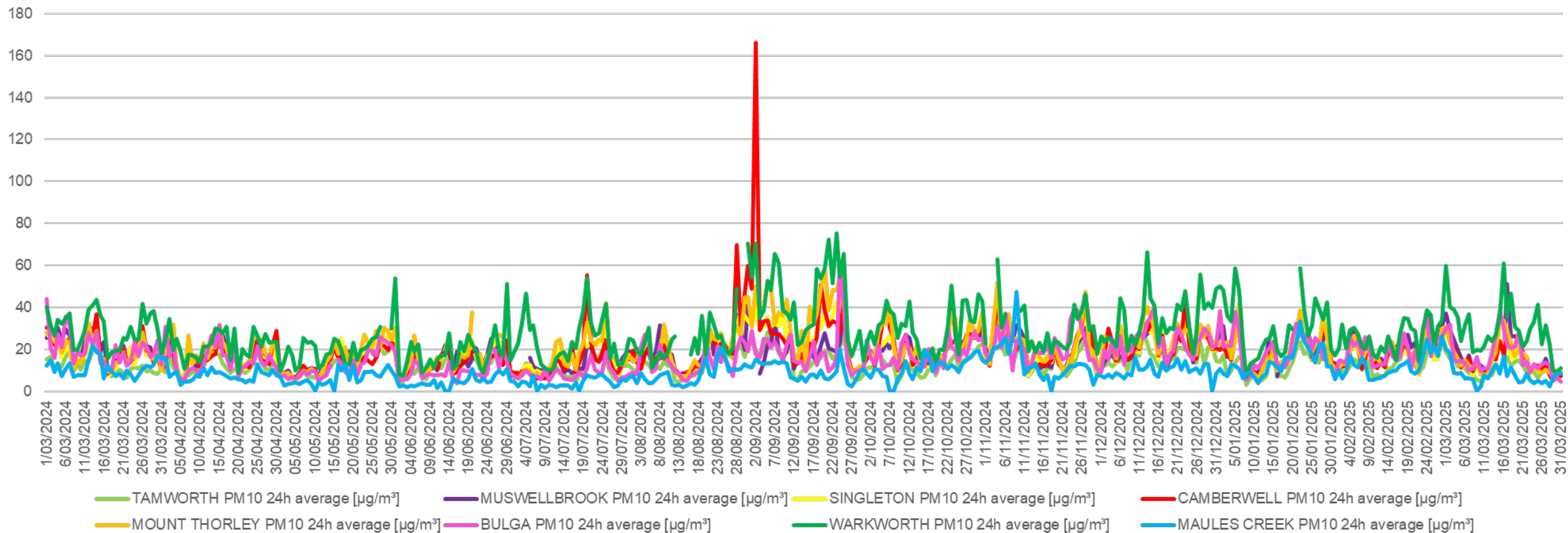
- Annual rolling average for TEOM 3 was 12.2  $\mu\text{g}/\text{m}^3$  on the 31<sup>st</sup> of March 2025 (criteria 30 $\mu\text{g}/\text{m}^3$ ).



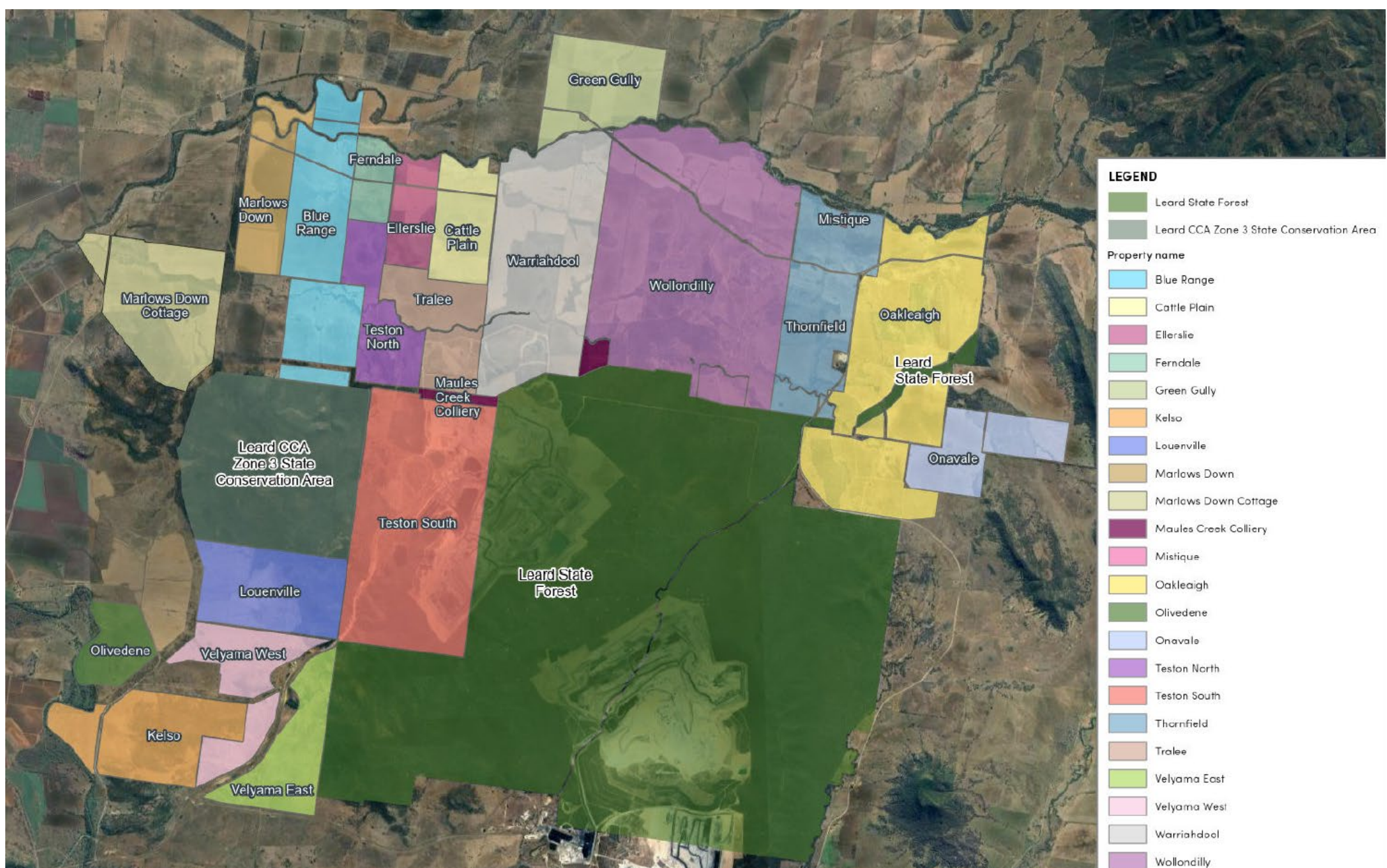
# Air Quality Monitoring Rolling 12 Months

Annual Reporting Data 1 March 2024 – 31 March 2025

Regional Air Quality PM10 Comparison



12 monthly	TAMWORTH PM10	MUSWELLBROOK PM10	SINGLETON PM10	CAMBERWELL PM10	MOUNT THORLEY PM10	BULGA PM10	WARKWORTH PM10	MAULES CREEK PM10
Annual Average	14.1185923	20.07032086	18.7187251	19.89814324	22.32086721	17.36732804	30.11223118	10.53328706
Max 24hr Ave	40.4	59.4	50.6	166	90.6	59.9	93.6	55.74



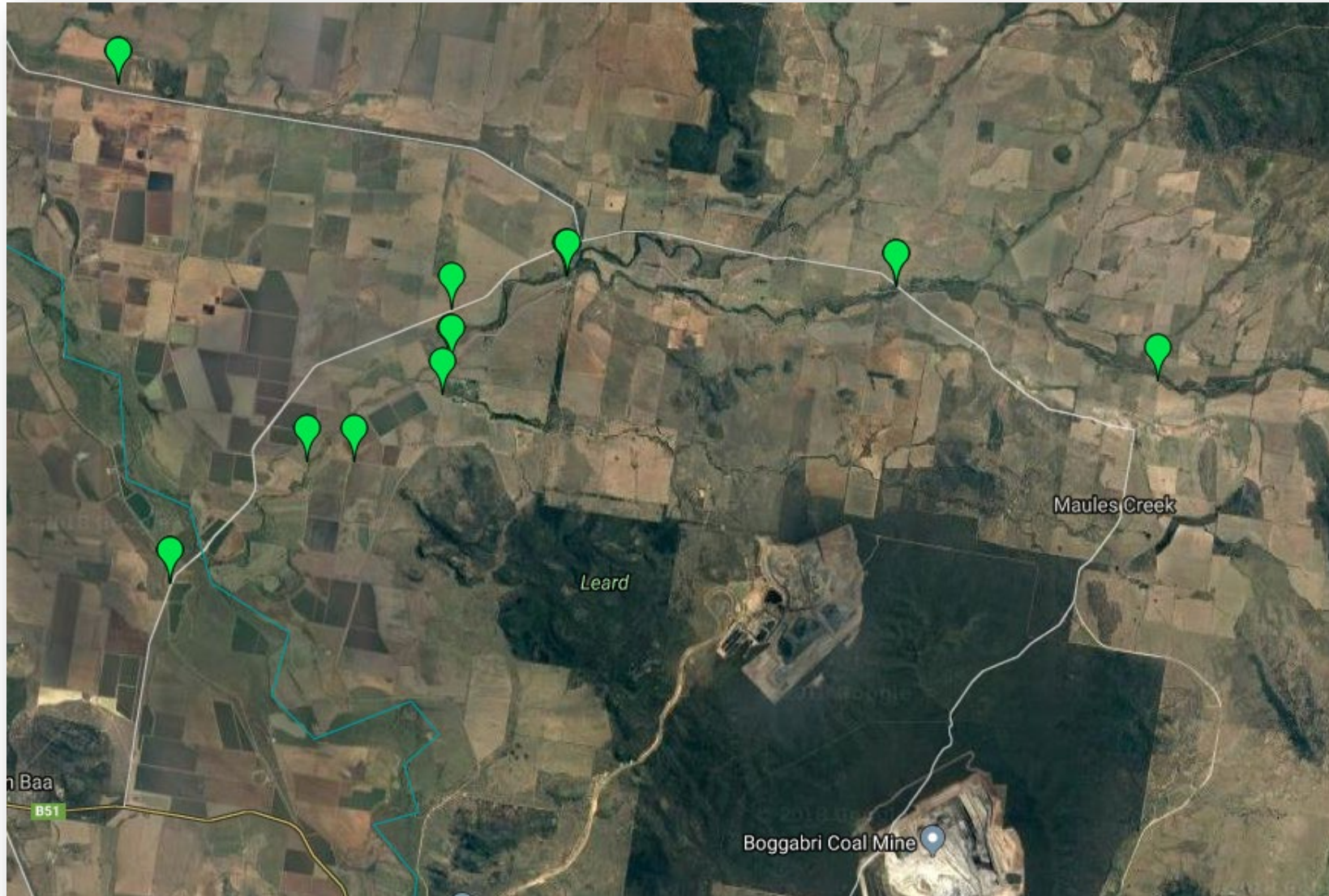


# Environmental Monitoring

Q1 2025 – Groundwater

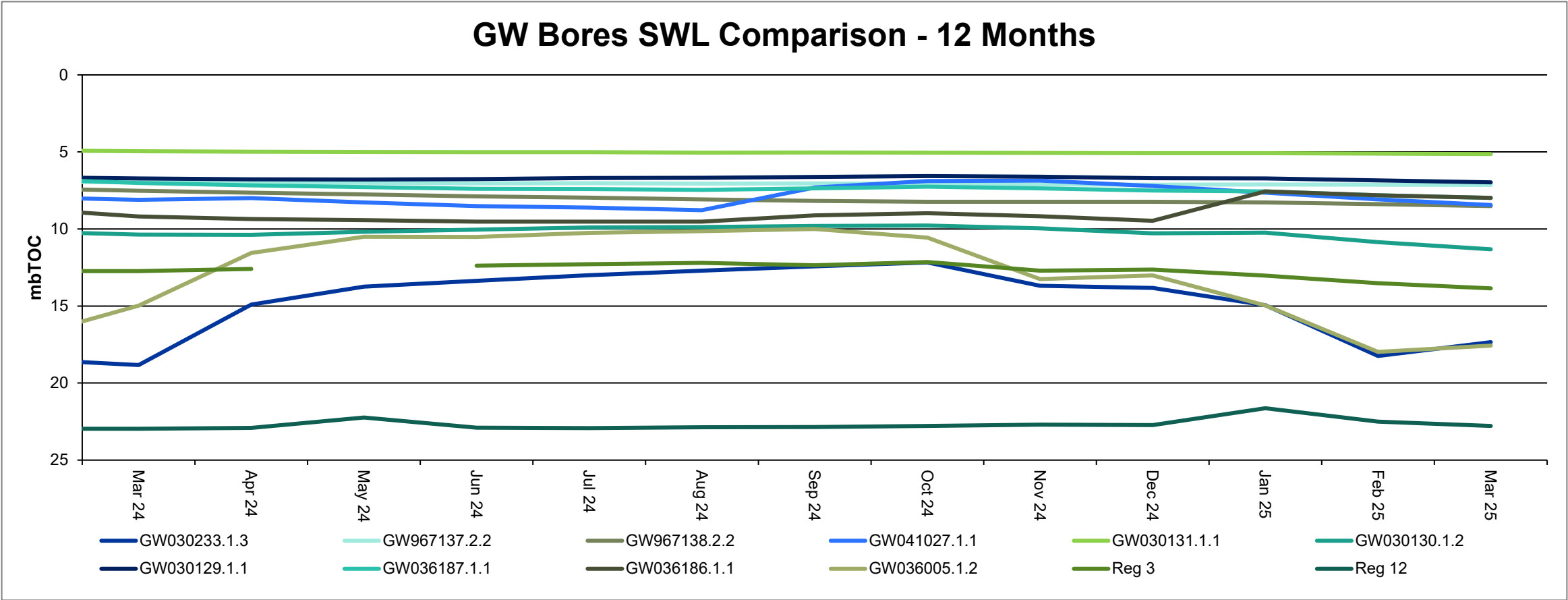


# Monitoring Locations





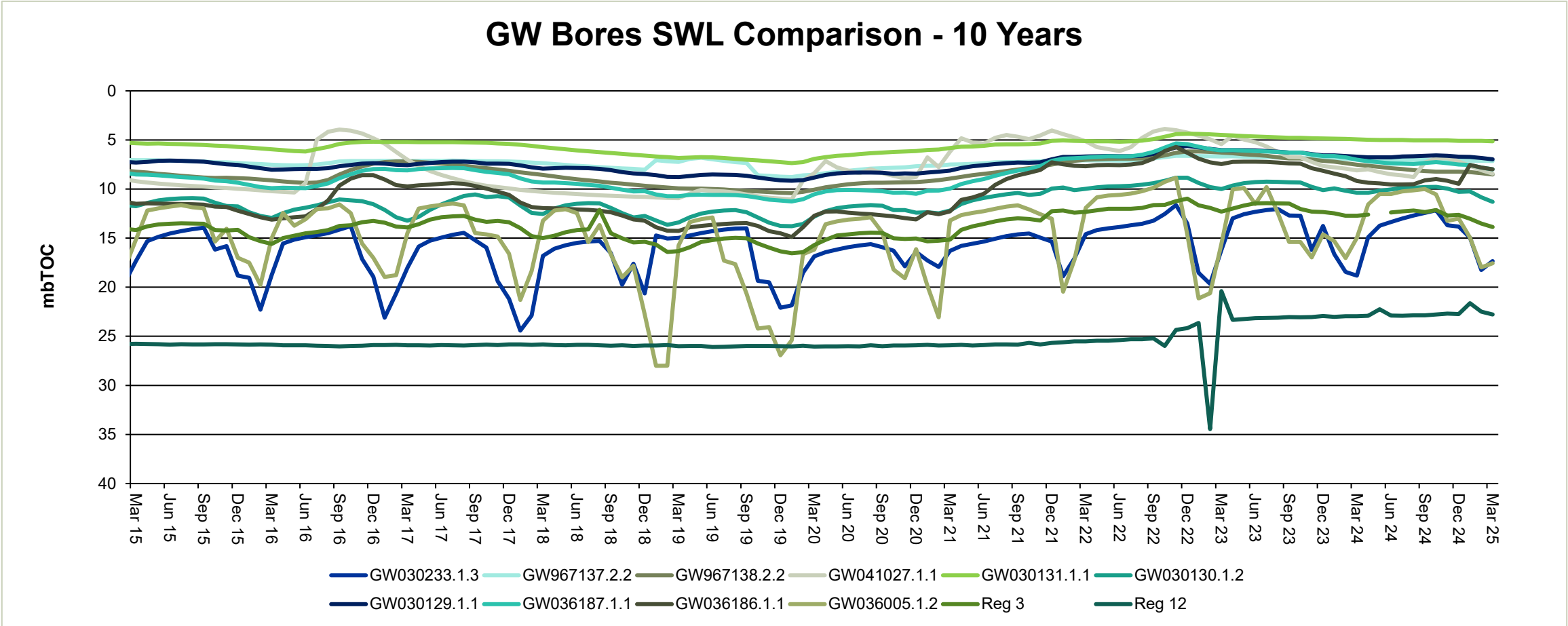
# Groundwater Levels



Source: NSW DPI- Water & MCCM monitoring data

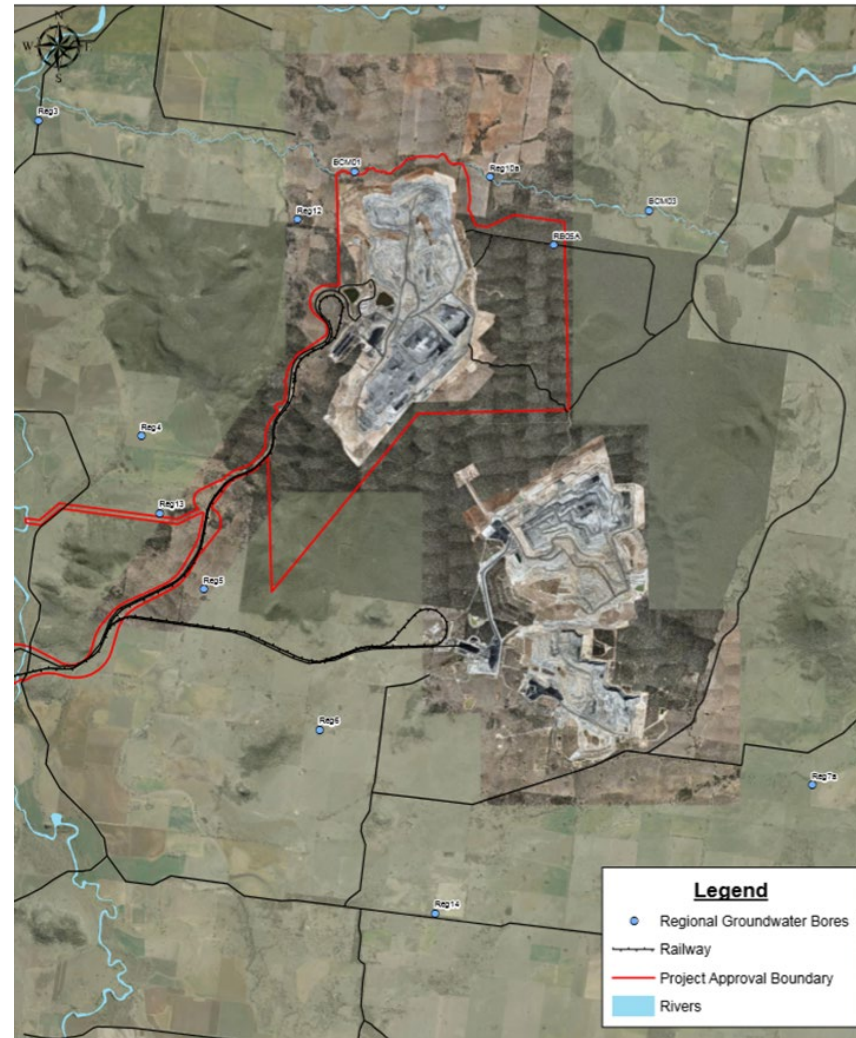
\* Note Reg12 and Reg3 both within Boggabri Volcanics

# Groundwater Levels



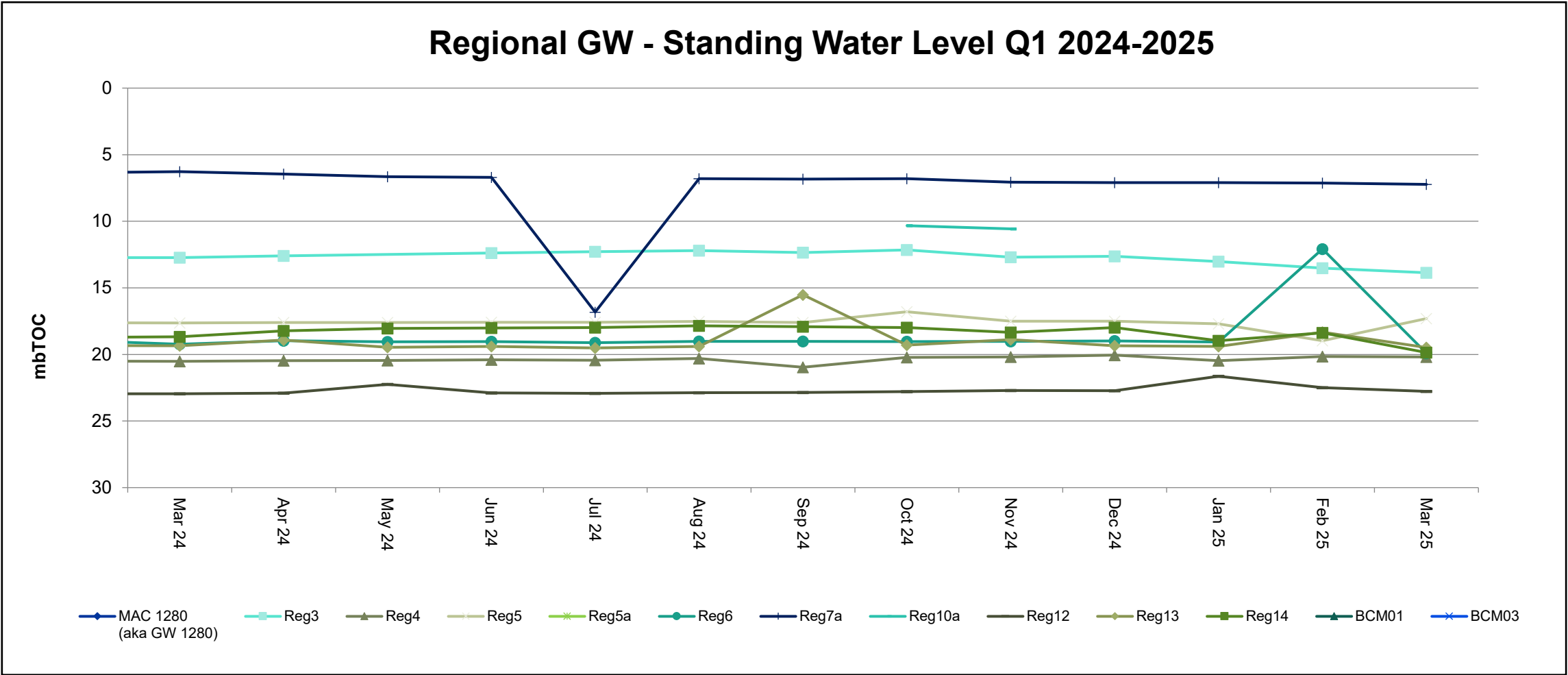
Source: NSW DPI- Water & MCCM monitoring data  
\* Note Reg12 and Reg3 both within Boggabri Volcanics

# Standing Water Levels





# Standing Water Levels



# Environmental Monitoring

Q1 2025 – Biodiversity



# Biodiversity Management

## Feral Animal Management

Most recent routine Whitehaven Biodiversity Feral Animal Control program (January to March 2025) results were:

- 1,378 out of total 2,165 feral pigs removed were from the Maules Biodiversity properties;
- 146 out of the total 154 feral goats removed were from the Maules Biodiversity properties;
- 97 out of total 238 Canid Pest Ejectors (1080) triggered were from the Maules Biodiversity properties.

## Weed Control

During January to March 2025 the following weed control was undertaken via spot spraying/jetting on the Maules Biodiversity Properties:

- 140ha of Woody Weeds such as Sweet Briar, Box Thorn, Blackberry and Velvet Pear, Tiger Pear and Prickly Pear were sprayed.
- 10ha of Grasses such as African Lovegrass, Rhodes grass and Coolatai grass were sprayed.
- 14ha of tracks sprayed as part of the track maintenance.





# Biodiversity Management

## Other Biodiversity Projects and Works

Planning for 2025 Revegetation Program.

Annual Track Maintenance Program.

Completed Annual Fauna (Microbat) Monitoring Program.

Quarterly Threatened Flora Inspections.

## Upcoming Biodiversity Projects and Works

Continue Pest Animal Management Program April to June 2025.

Continue 2025 Revegetation Program

Continue Seasonal Weed Control Programs.

Continue Track Maintenance Program.

Planning for Annual Nest Box Monitoring and Installation

Planning for Noisy Miner Management

Commence FY25 Ecological Burn program

Commence 2025 Winter Bird Survey

Planning towards Drone Surveys.



# Project Continuation

CCC Meeting May 2025

# MCCP EIS Approval Process Update

- Scoping Report lodgement - [Complete](#)
- Secretary's Environmental Assessment Requirements (SEARs) issued by DPHI on 26 October 2023 - [Complete](#)
- Site Verification Certificate granted over the proposed Mining Lease Application area - [Complete](#)
- EPBC Referral lodged on 15 July 2024. Controlled Action decision - [Complete](#)
- EIS lodgment to DPHI expected to occur by end of May 2025.
- EIS exhibition expected to occur via DPHI Major Projects Portal – targeting June subject to DPHI.
- Exhibition period to be confirmed by DPHI – typically 28 days

## APPROVAL TIMELINE

Preparation of Scoping Report

Lodgement of Scoping Report

SEARs issued from the DPHI

EIS development

**WE ARE  
HERE**

Development Application, including the EIS, lodged with DPHI

DPHI reviews the EIS and prepares for public exhibition

EIS placed on public exhibition for comment

Whitehaven responds to submissions

DPHI assesses the EIS, submissions and Whitehaven responses

The NSW Minister for Planning directs IPC to undertake an Independent Assessment

The IPC makes a determination

# MCC CCC Meeting Management Plans



# MCC Management Plans

## Main Changes

- Change to the format to align Management Plans across WHC
- No additional information or changes to the current information, WHC taking a streamline approach to the Management Plans.
- Current Plans awaiting determination:
  - Aboriginal Cultural Heritage Management Plan
- Current Plans being prepared for submission:
  - Environmental Management Strategy
  - Social Impact Management Plan



## Maules Creek Traffic Management Plan

October 2024

Whitehaven Coal Limited  
ABN 68 124 425 395  
Level 28, 259 George Street, Sydney NSW 2000  
PO Box R1113, Royal Exchange NSW 1225  
02 8222 1100  
info@whitehavencoal.com.au  
www.whitehavencoal.com.au



# Community

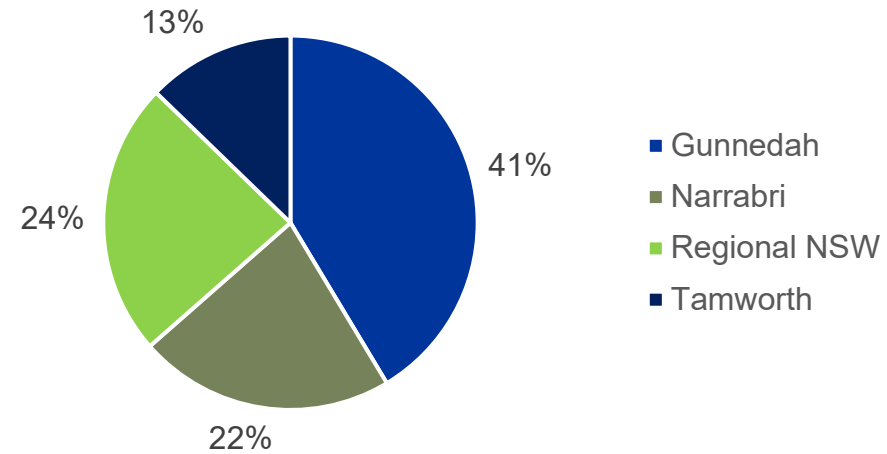
Q1 2025



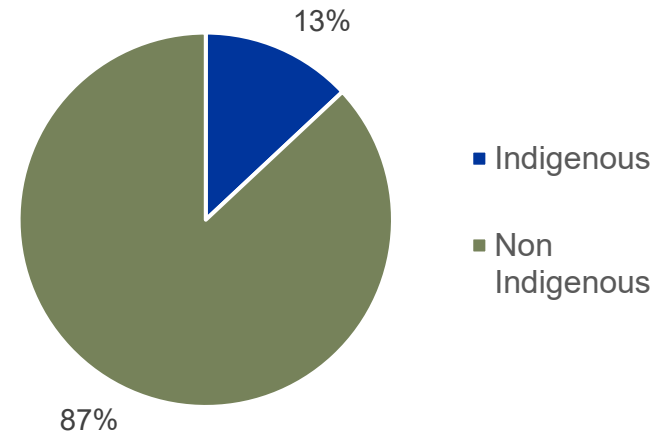
# Community Investment

- \$236,378.15 delivered in NSW Community Donations and Sponsorships
  - Discretionary: \$70,774.54
  - Community Investment Committee: \$64,640.91
  - Partnerships: \$100,962.70
  - 61 successful applications from a total of 281

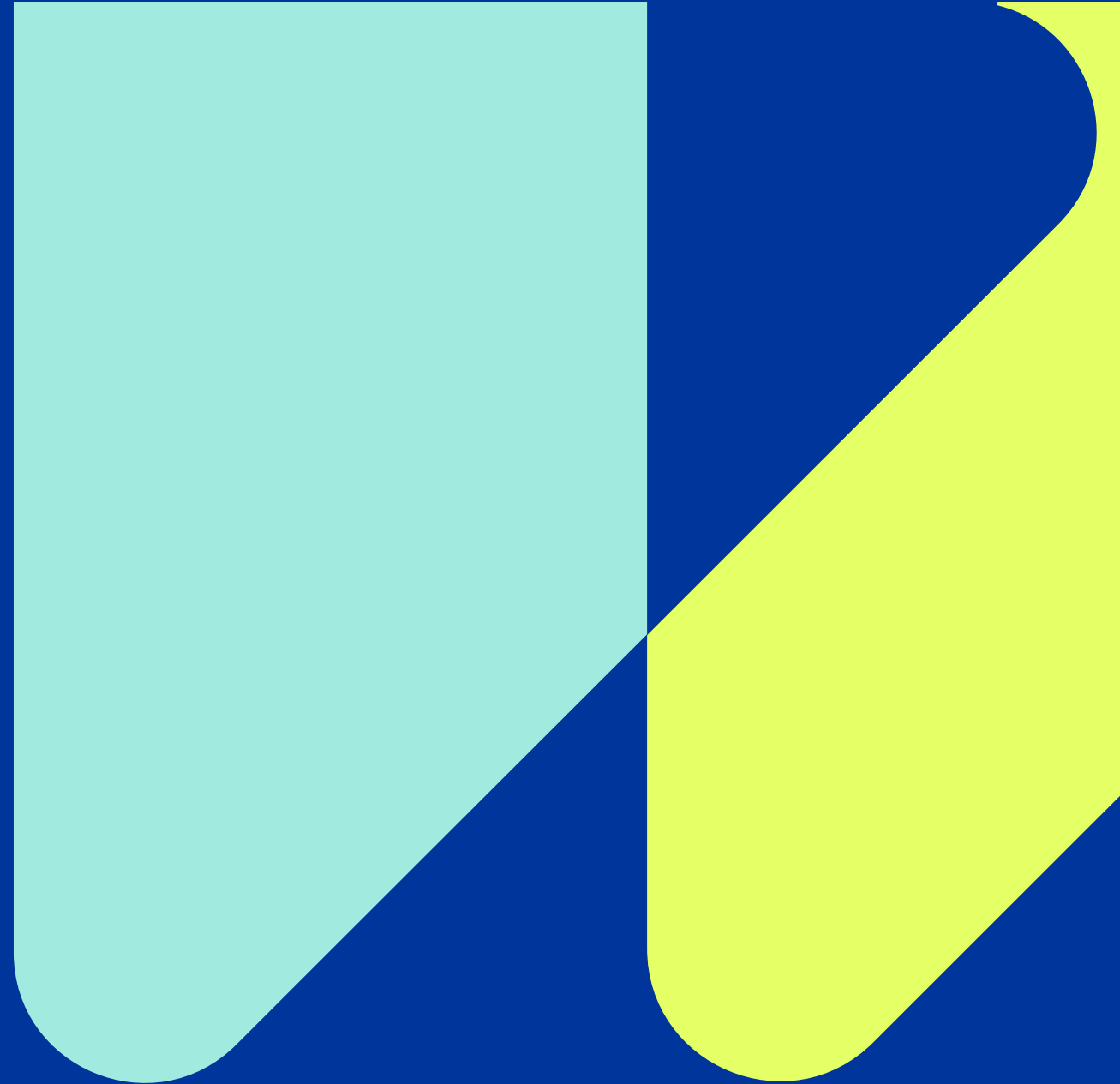
Region Benefitted



Orientation of Spend



Thank you



# Maules Creek Coal Mine Community Consultative Committee Meeting #49

## Environmental Monitoring Report For the Q1 period, January – March 2025

### **Attended Noise Monitoring**

Maules Creek Coal (MCC) engaged an independent acoustic consultant to conduct LAeq (15minutes) and LA1 (1 minute) attended noise monitoring at six monitoring locations on site.

#### **A. NOISE GENERATED BY MCCM AGAINST OPERATIONAL DAY & NIGHT NOISE CRITERIA; January - March 2025 .**

The results show that MCCM is within EPL 20221 compliance limits, that operations did not exceed the applicable; LAeq (15minute) 35dB Criteria, LA1 (1Minute) 45dB Criteria and the EPA's Noise Policy for Industry compliance guidelines.

**Table 1 –January Noise Monitoring**

Location	Start date and time	Wind		Stability class	Very enhancing? <sup>1</sup>	Limits, dB <sup>1</sup>		Site levels, dB <sup>2</sup>		Exceedances, dB	
		Speed m/s	Direction <sup>3</sup>			L <sub>Aeq,15minute</sub>	L <sub>Amax</sub>	L <sub>Aeq,15minute</sub>	L <sub>Amax</sub>	L <sub>Aeq,15minute</sub>	L <sub>Amax</sub>
NM1	22/01/2025 22:30	0.3	177	F	No	35	45	IA	IA	Nil	Nil
NM2	22/01/2025 23:30	0.8	199	F	No	39	45	IA	IA	Nil	Nil
NM3	22/01/2025 23:15	0.8	200	F	No	35	45	IA	IA	Nil	Nil
NM4	22/01/2025 23:00	0.5	185	F	No	35	45	IA	IA	Nil	Nil
NM5	22/01/2025 22:00	0.3	186	F	No	35	45	IA	IA	Nil	Nil
NM6	22/01/2025 23:58	3.3	149	D	Yes	40	50	IA	IA	Nil	Nil

**Table 2 – February Noise Monitoring**

Location	Start date and time	Wind		Stability class	Very enhancing? <sup>1</sup>	Limits, dB <sup>1</sup>		Site levels, dB <sup>2,3</sup>		Exceedances, dB	
		Speed m/s	Direction <sup>4</sup>			L <sub>Aeq,15minute</sub>	L <sub>A1,1minute</sub>	L <sub>Aeq,15minute</sub>	L <sub>A1,1minute</sub>	L <sub>Aeq,15minute</sub>	L <sub>A1,1minute</sub>
NM1	6/02/2025 22:30	0.8	187	F	No	35	45	IA	IA	Nil	Nil
NM2	6/02/2025 23:30	3.2	103	D	Yes	44	49	IA	IA	Nil	Nil
NM3	6/02/2025 23:16	1.1	166	F	No	35	45	IA	IA	Nil	Nil
NM4	6/02/2025 23:00	0.5	303	F	No	35	45	IA	IA	Nil	Nil
NM5	6/02/2025 22:00	0.5	58	F	No	35	45	IA	IA	Nil	Nil
NM6	6/02/2025 23:58	3.3	72	D	Yes	40	50	IA	IA	Nil	Nil

**Table 3 – March Noise Monitoring**

Location	Start date and time	Wind		Stability class	Very enhancing? <sup>1</sup>	Limits, dB <sup>1</sup>		Site levels, dB <sup>2,3</sup>		Exceedances, dB	
		Speed m/s	Direction <sup>4</sup>			L <sub>Aeq,15minute</sub>	L <sub>A1,1minute</sub>	L <sub>Aeq,15minute</sub>	L <sub>A1,1minute</sub>	L <sub>Aeq,15minute</sub>	L <sub>A1,1minute</sub>
NM1	12/03/2025 22:30	2.0	126	D	No	35	45	<20	<20	Nil	Nil
NM2	12/03/2025 23:30	2.9	82	D	No	39	45	<20	<20	Nil	Nil
NM3	12/03/2025 23:21	3.1	82	D	Yes	40	50	<20	<20	Nil	Nil
NM4	12/03/2025 23:00	1.4	103	F	No	35	45	<20	<20	Nil	Nil
NM5	12/03/2025 22:00	1.5	129	E	No	35	45	<20	<20	Nil	Nil
NM6	12/03/2025 23:58	1.6	83	F	No	35	45	<20	<20	Nil	Nil

### **Wind Direction during Attended Monitoring**

Wind direction data is collected from the Maule's Creek Coal Mine (MCCM) Automated Weather Station (AWS). Wind data for the duration of the attended monitoring assessment, recorded at the MCCM AWS is presented in the table below.

**Table 4 - Prevailing Wind Direction**

Monitoring Date	Prevailing Wind Direction
January	SE
February	SE
March	SE

## **Blast Monitoring**

There was 39 blasts at MCCM during Q1 2025. All blast monitoring results recorded within the reporting period have complied with applicable overpressure and ground vibration limits specified in the respective approvals.

***Table 5 – Blast Results Summary***

Parameter	Units	Frequency	Number	Average	Max	100% Limit	Exceedance (Yes / No)
Noise	dB	All	39	94.65	114.10	120	No
Vibration	mm/s		39	0.09	1.56	10	No

## Air Quality

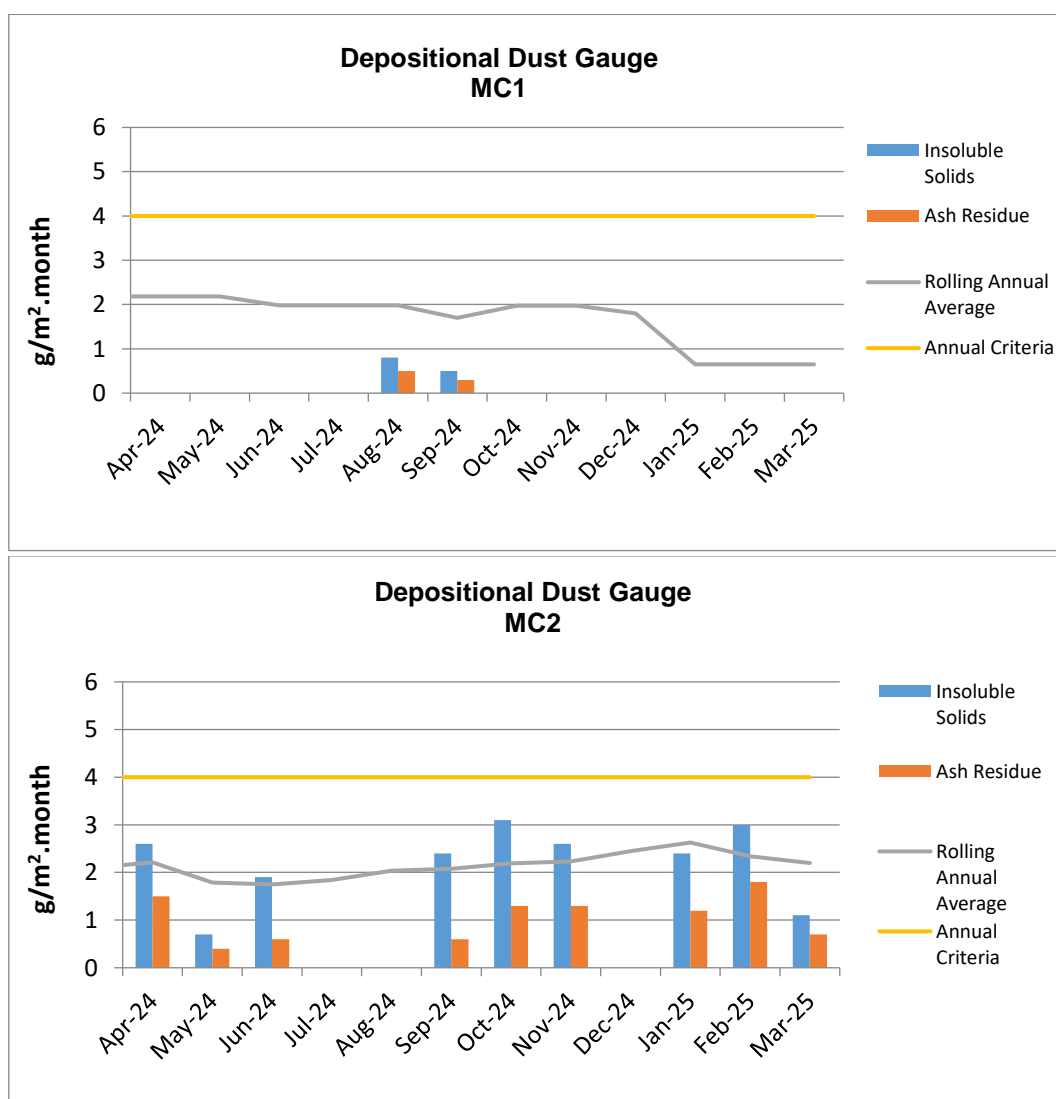
### A. Total Depositional Dust

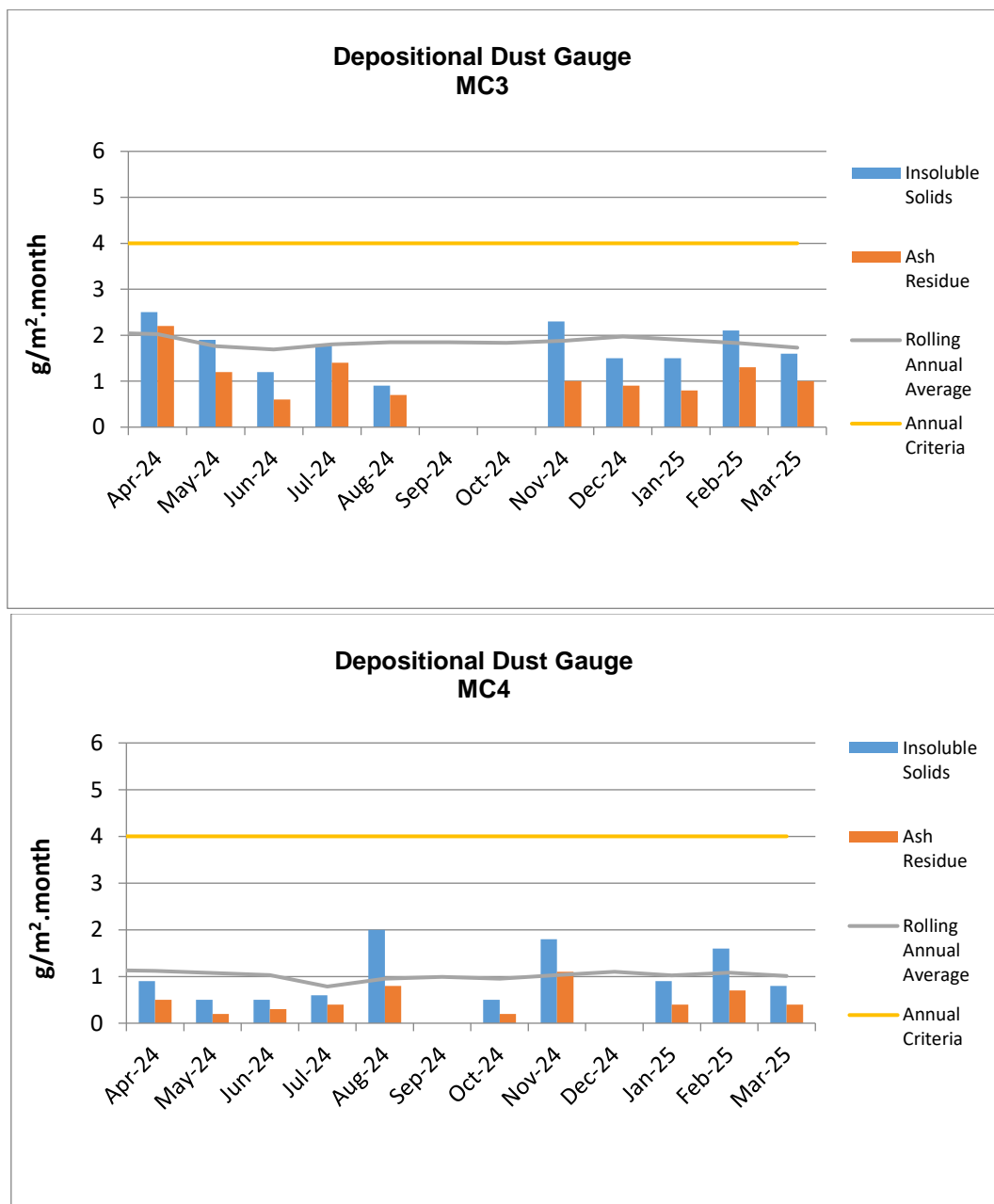
The 12 monthly rolling annual average remains below the relevant Project Approval (PA 10\_0138) criteria of 4g/m<sup>2</sup>/month for the respective monitoring points.

**Table 6 – Deposited Dust Gauge Results [g/m<sup>2</sup>/month]**

MONTH	MC1	MC2	MC3	MC4
January	27.3c	2.4	1.5	1.9
February	6.0c	3.0	2.1	1.6
March	11.6c	1.1	1.6	0.8
<b>12 MONTH ROLLING AVERAGE</b>	<b>0.7</b>	<b>2.2</b>	<b>1.7</b>	<b>1.0</b>

<sup>c</sup> samples contaminated by bird dropping, decomposed insects or vegetable matter.





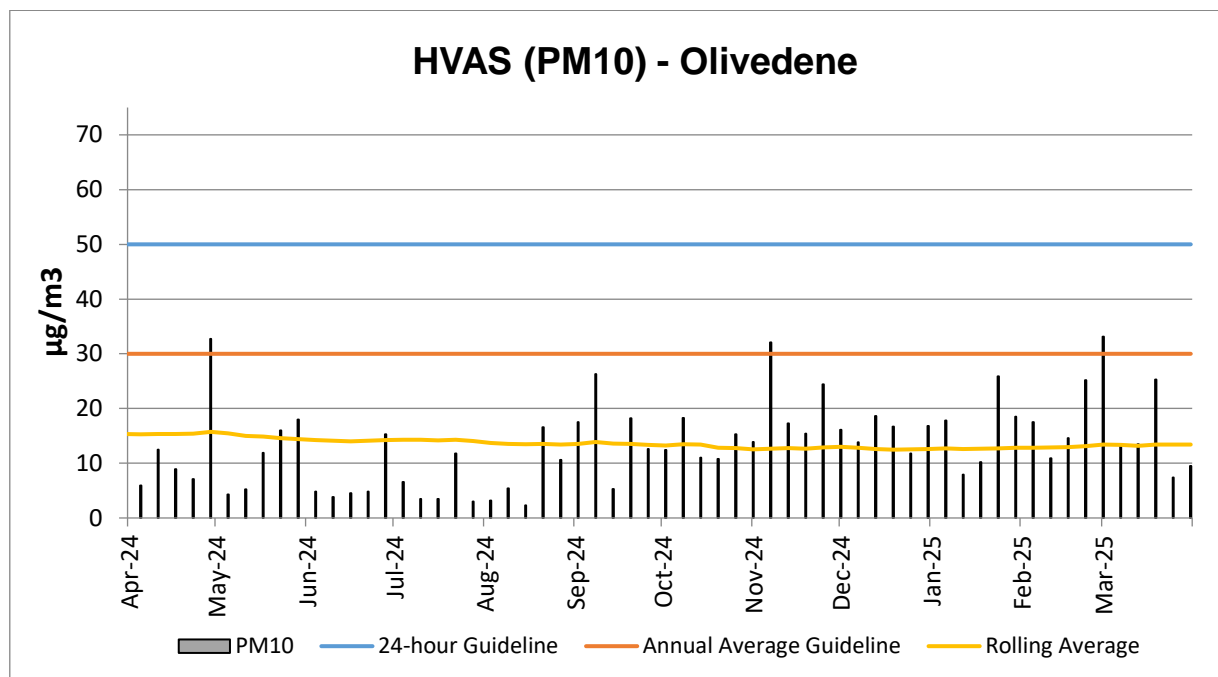
\* Blank cells indicate sample periods where the sample has been contaminated and excluded from the results tables due to contaminated material (insect larvae, bird droppings, vegetation etc.).

## B. High Volume Air Sampling (HVAS)

The HVAS monitor is located on the property 'Olivedene,' a mine owned property on Therribri Road. During past 12 months, there have been no exceedances of the 24-hour average of 50 µg/m³.

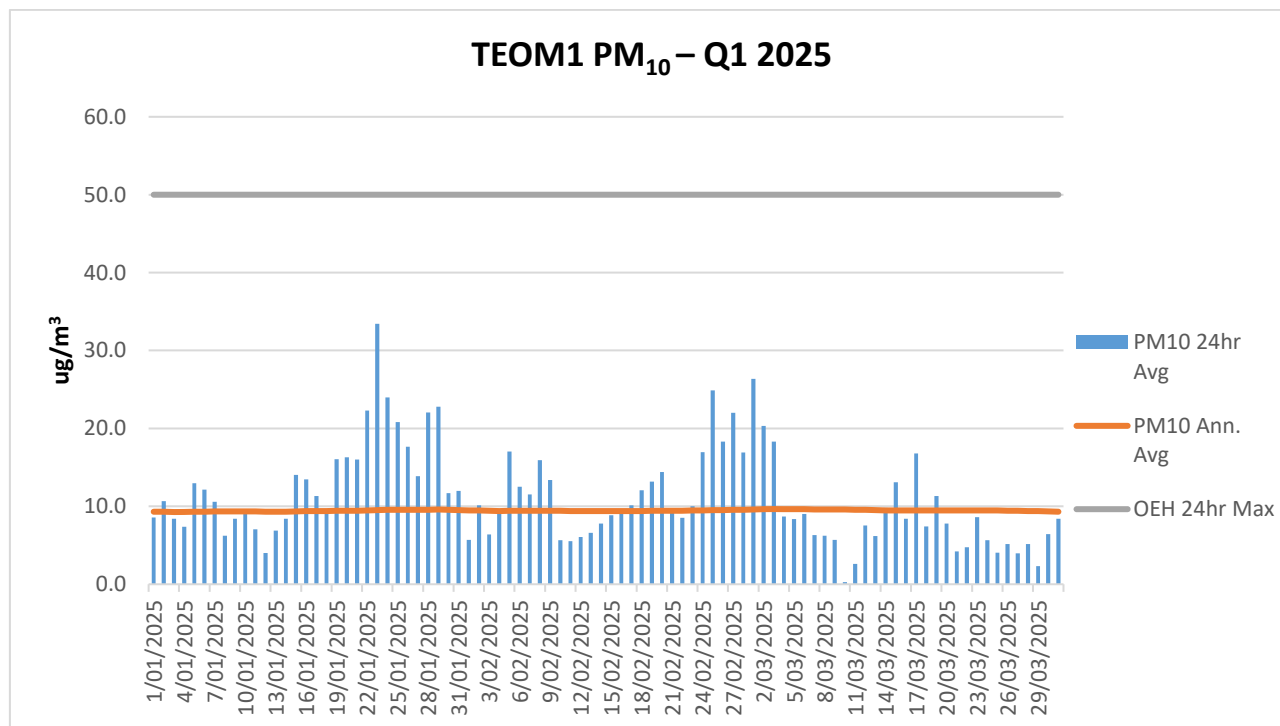
HVAS PM<sub>10</sub> Rolling Annual Average as of March was **13.4 µg/m³**, which is below the Annual Average Guideline of 30 µg/m³.





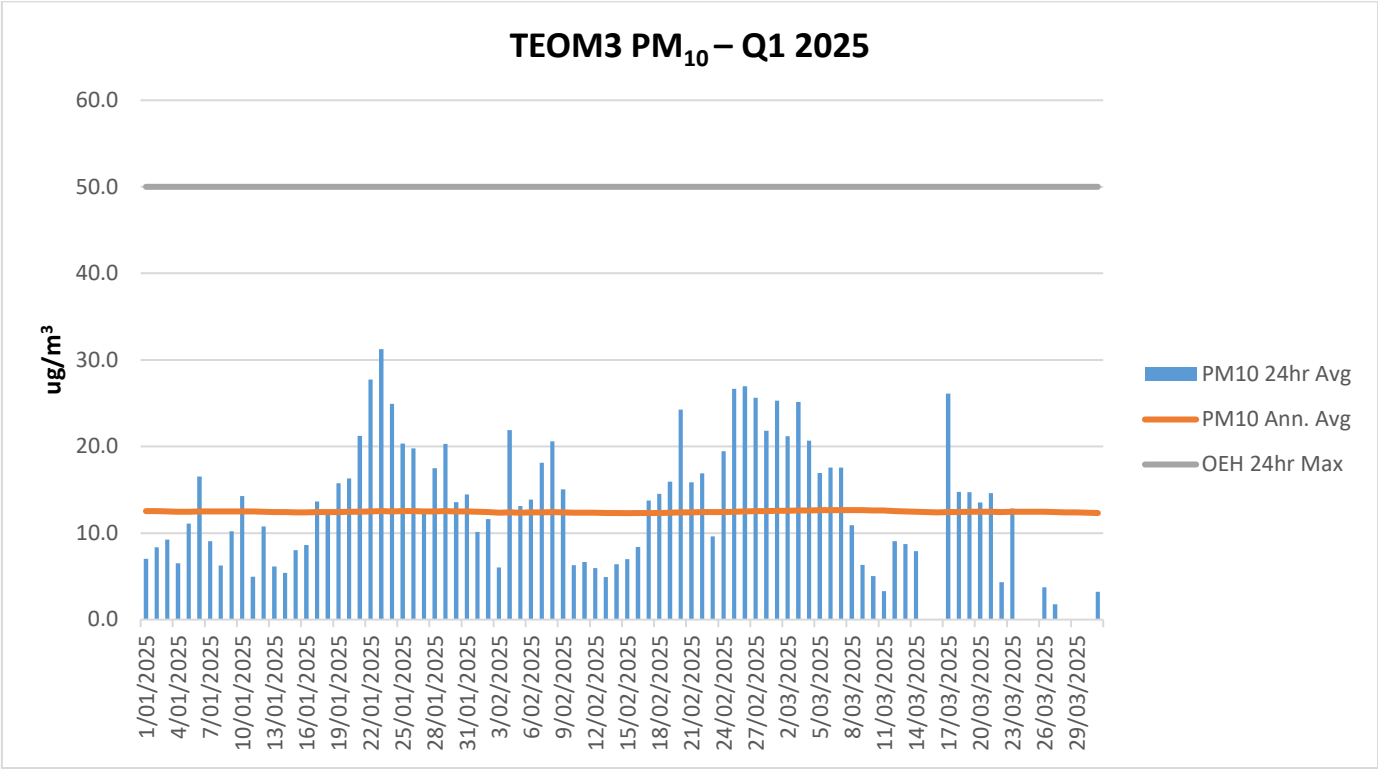
#### C. TEOM - PM10 Results

The annual rolling average for PM10 at the Maules Creek Coal for TEOM1 was **9.3  $\mu\text{g}/\text{m}^3$**  and at TEOM3 was **12.2  $\mu\text{g}/\text{m}^3$**  these are both below the Project Approval annual average criteria of 30 $\mu\text{g}/\text{m}^3$  as shown in the following figure. There have been no exceedances of the 24-hour average for Q1.



**Figure 1 - TEOM Result – Particulate Matter PM<sub>10</sub> $\mu\text{g}/\text{m}^3$**

\* Blank columns indicate sample periods where there was either power outage, maintenance or other related causes.

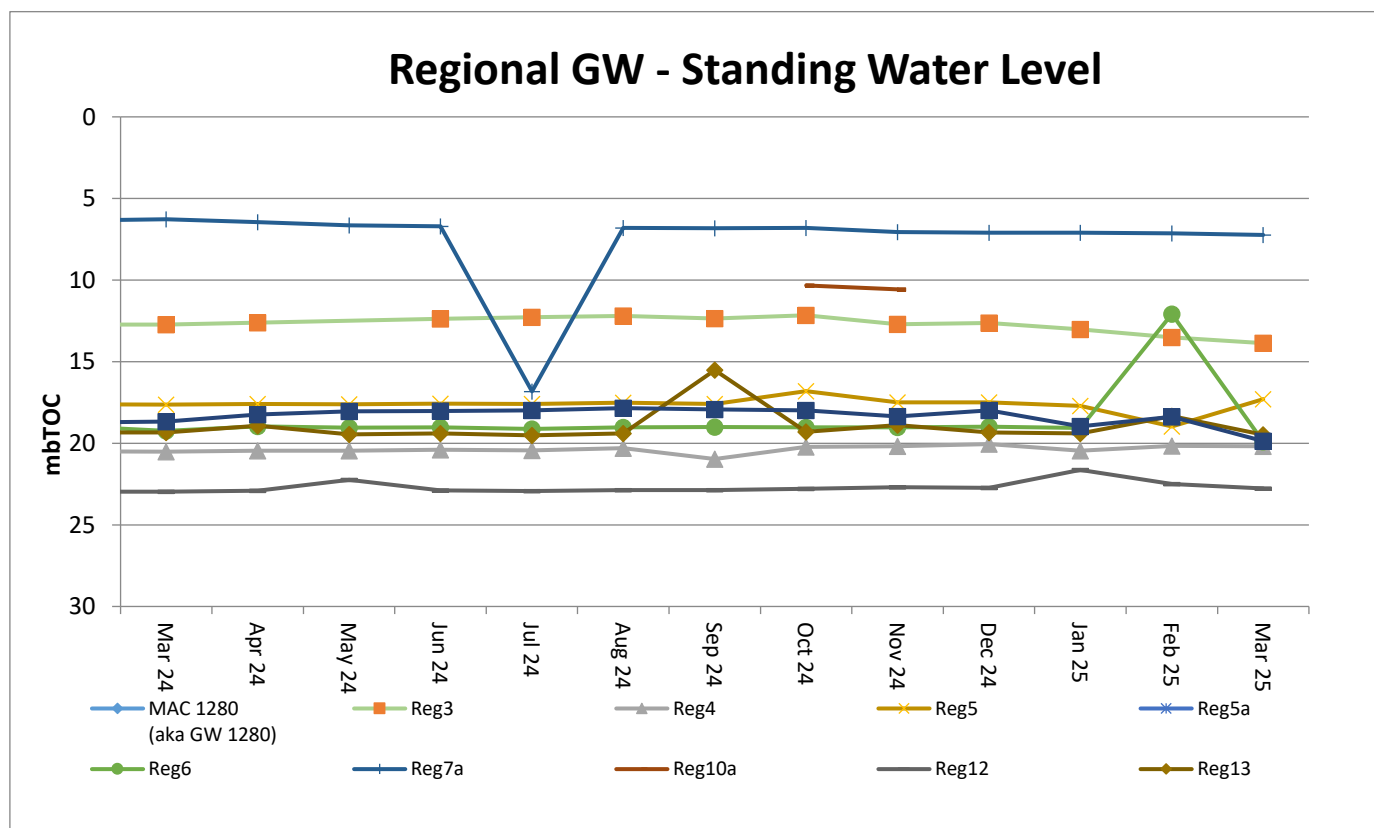


**Figure 2 - TEOM Result – Particulate Matter  $\text{PM}_{10\mu\text{g}/\text{m}^3}$**   
\* Blank columns indicate sample periods where there was either power outage, maintenance or other related causes.

## Water Monitoring

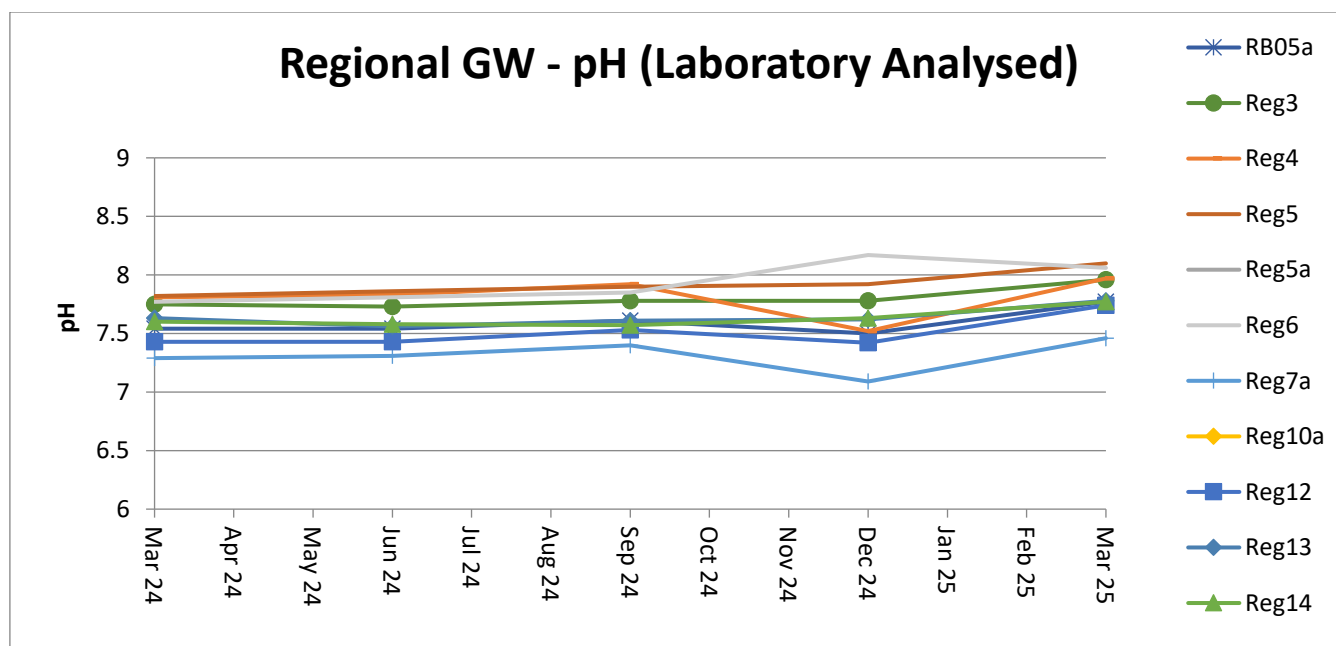
### A. Groundwater

Groundwater monitoring results in open standpipe piezometers show levels to be relatively stable. The Regional bores were installed between Q4, 2013 and Q1, 2014. BCM01, BCM03, Reg10 are shallow bores which have remained dry since construction in 2013.



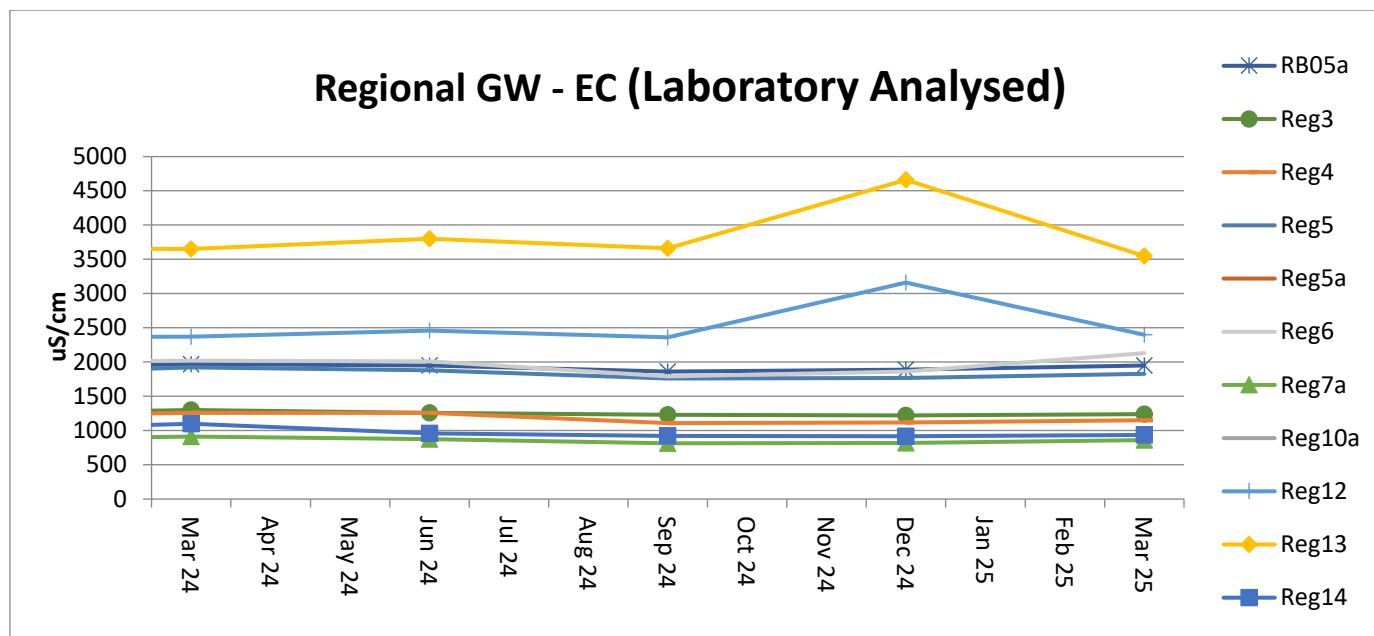
### Acidity / Alkalinity (pH)

Over the past twelve months pH readings across the regional bores have remained static with very little fluctuation.



## Electrical Conductivity

Laboratory Electrical Conductivity (EC) levels are all within historic groundwater EC range of 500 $\mu$ S/cm to 2,500 $\mu$ S/cm, with the exception of monitoring bore Reg13 which has a historic groundwater EC range of 2,500 $\mu$ S/cm to 4,100 $\mu$ S/cm. Within the last twelve months EC has remained static.

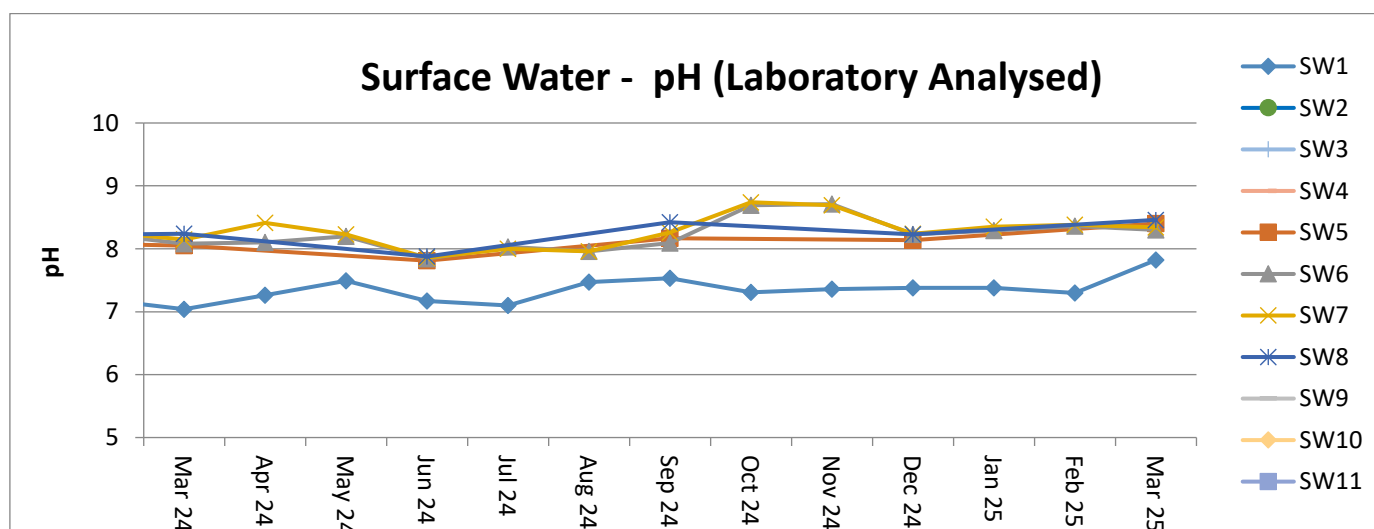


## B. Surface Water – Creeks and Rivers

Routine surface water monitoring is conducted in surrounding creeks and rivers on a monthly basis. Results for parameters including pH, EC and Total Suspended Solids (TSS) are shown in the figures below.

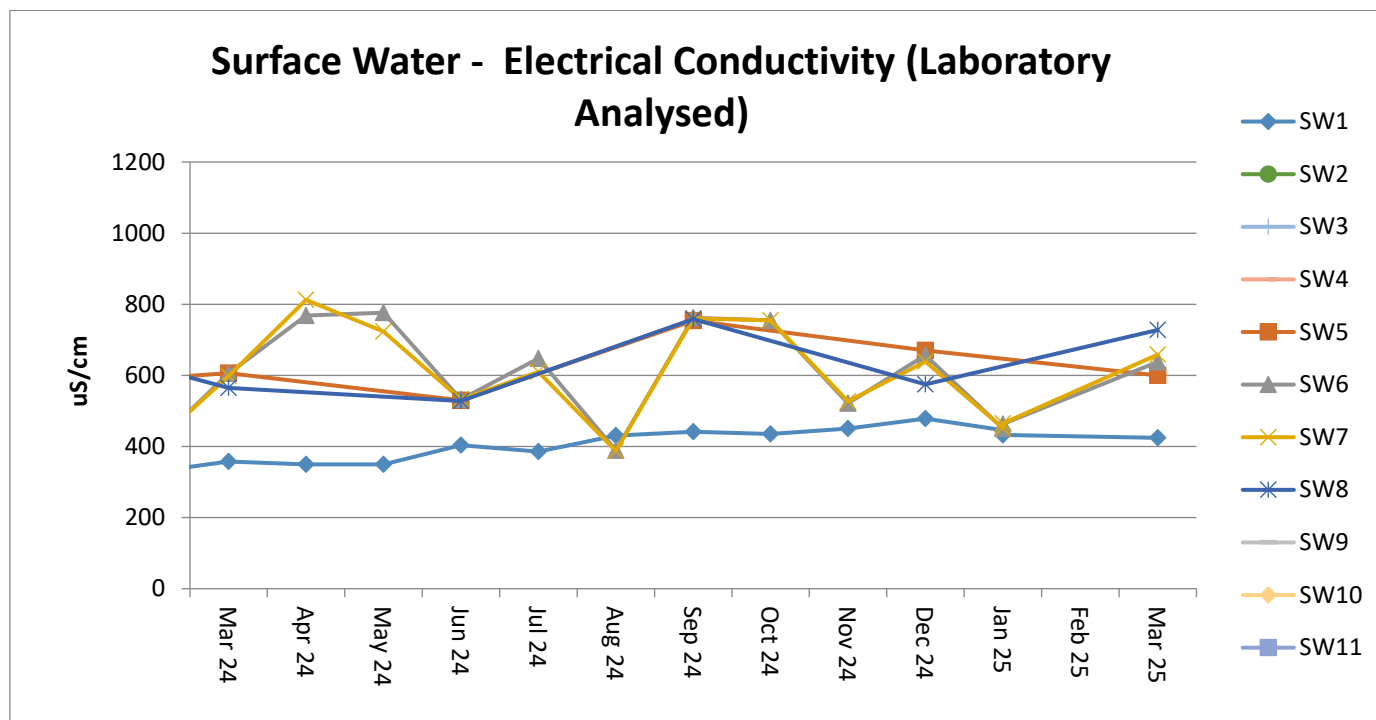
### Acidity / Alkalinity (pH)

Monitoring results for pH in creeks and rivers surrounding MCCM are all trending within the ANZECC range for Irrigation, Ecosystem Health and Recreation.



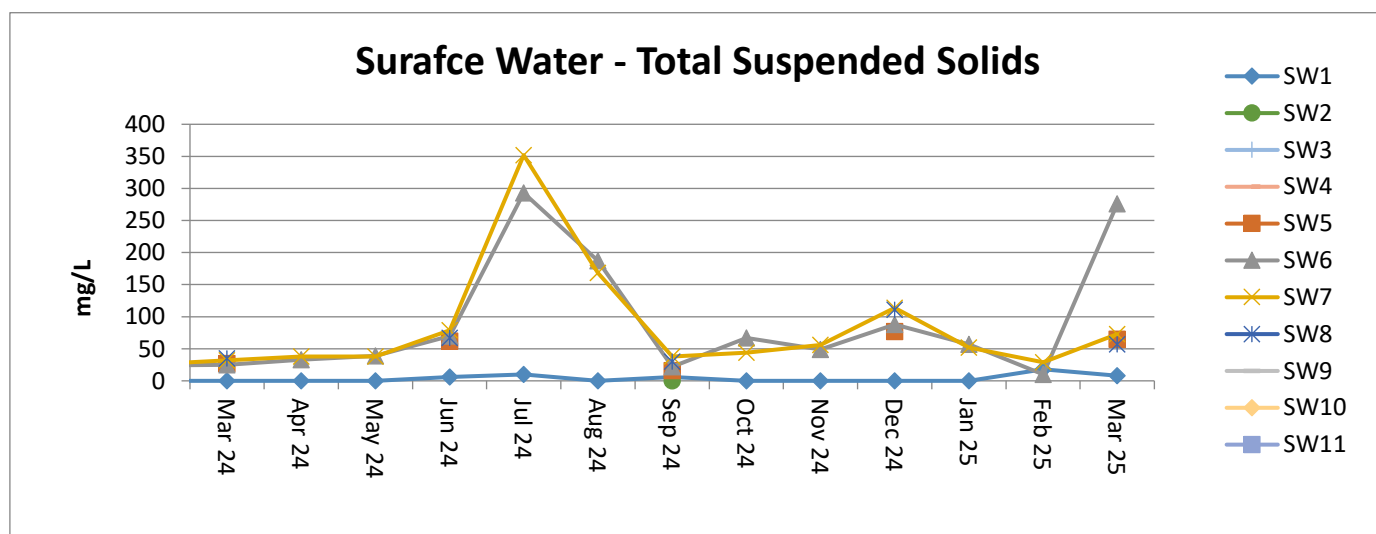
## Electrical Conductivity

Surface water EC trends have remained consistent with SW5, SW6, SW7 and SW8 all historically variable. SW5, SW6, SW7 and SW8 are points along the Namoi River which are subject to regulated and variable flow regimes.



#### Total Suspended Solids (TSS)

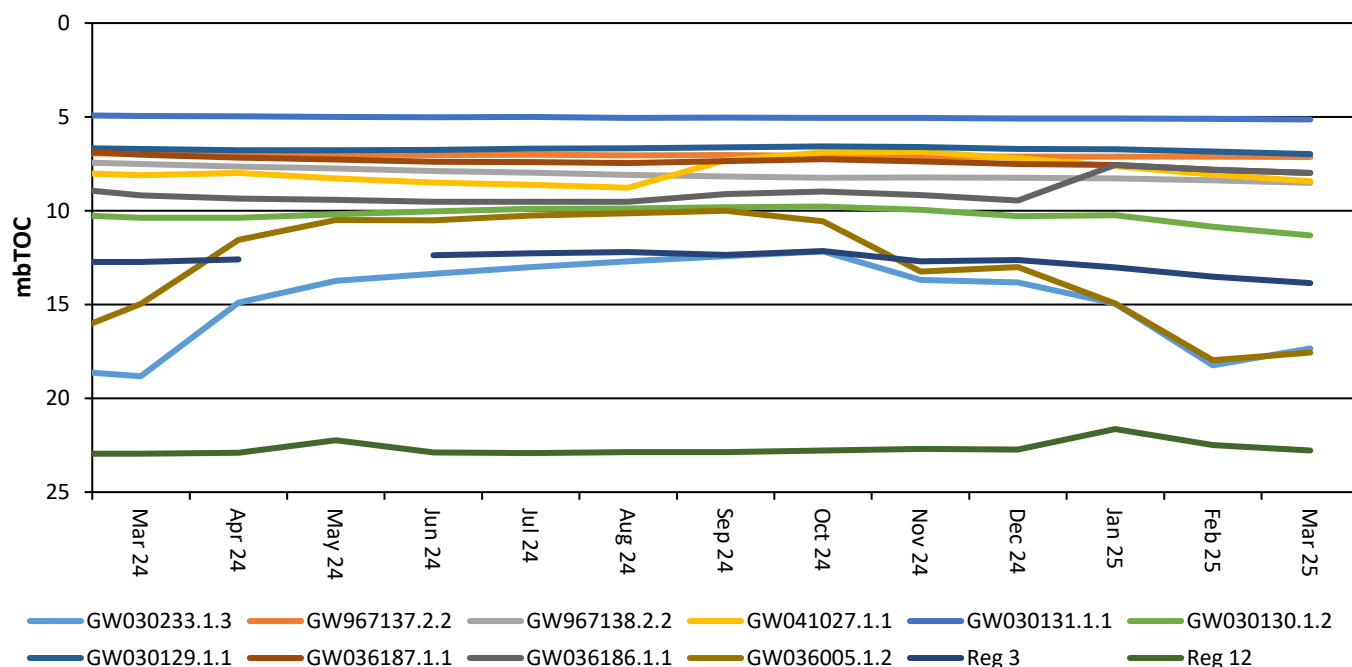
Surface water TSS trends have remained generally consistent with historical results. SW5, SW6, SW7 and SW8 are historically variable as they are located along the Namoi River which is subject to regulated and variable flow regimes.



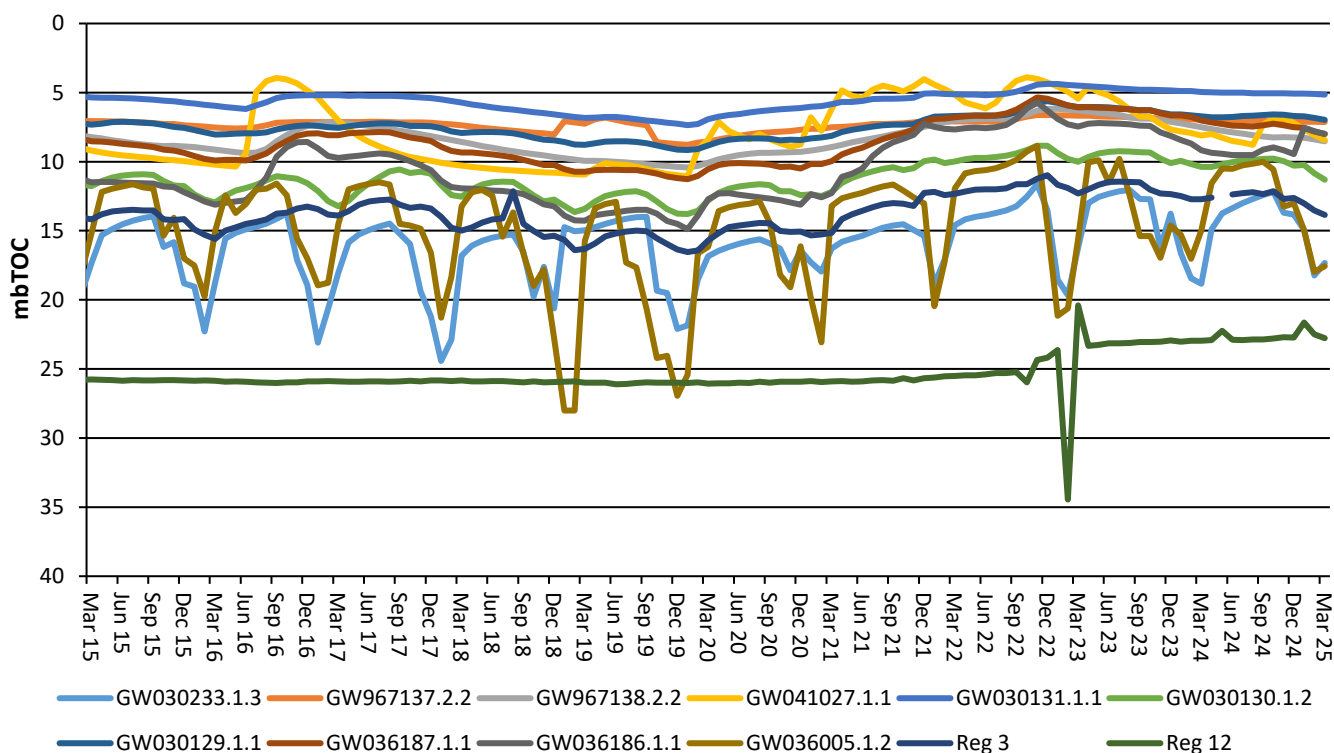
## Regional Groundwater monitoring

Maules Creek Coal Mine monitors regional bores across the region.

### GW Bores SWL Comparison - 12 Months



### GW Bores SWL Comparison - 10 Years



## **Rehabilitation**

Progressive rehabilitation works are ongoing. MCC is on track to complete CY25 rehabilitation in accordance with the Forward Plan.

## **Feral Animal Management**

Most recent routine Whitehaven Biodiversity Feral Animal Control program (January to March 2025) results were:

- 1,378 out of total 2,165 feral pigs removed were from the Maules Biodiversity properties;
- 146 out of the total 154 feral goats removed were from the Maules Biodiversity properties;
- 97 out of total 238 Canid Pest Ejectors (1080) triggered were from the Maules Biodiversity properties.

## **Weed Control**

During January to March 2025 the following weed control was undertaken via spot spraying/jetting on the Maules Biodiversity Properties:

- 140ha of Woody Weeds such as Sweet Briar, Box Thorn, Blackberry and Velvet Pear, Tiger Pear and Prickly Pear were sprayed.
- 10ha of Grasses such as African Lovegrass, Rhodes grass and Coolatai grass were sprayed.
- 14ha of tracks sprayed as part of the track maintenance.

## **Upcoming Biodiversity Projects and Works**

- Continue Pest Animal Management Program April to June 2025.
- Continue 2025 Revegetation Program.
- Continue Seasonal Weed Control Programs.
- Continue Track Maintenance Program.
- Planning for Annual Nest Box Monitoring and Installation.
- Planning for Noisy Miner Management.
- Commence FY25 Ecological Burn program.
- Commence 2025 Winter Bird Survey.
- Planning towards Drone Surveys.

## **Community Complaints**

There was four community complaints registered during the quarter, all community complaints are available on the company website at <https://whitehavencoal.com.au/our-business/our-assets/maules-creek-mine/>.



MAULES CREEK COAL MINE 2024 Community Complaints Register				
Date Received	Method	Category	Nature of Complaint	MCCM Response
25/02/2025	Email	Biodiversity	Questions were raised by a member of the community relating to the status of the Stage 3 BTM Biodiversity Strategy	MCC reviewed the data and provided a response to the DPHI
7/03/2025	Email	Blasting	Local landholder complained about two blasts fired on 7th March. The blast was audible at their residence.	MCC blast on one occasion on the 7th March. A review of the data confirmed that the blast complied with the approved overpressure levels and operating conditions. The complainant was contacted and informed that the blast was in compliance.

7/03/2025	Email	Blasting	Local resident complained about a blast on the 7th March at approximately 11am. The complainant described it as being very loud followed by a sulphur smell.	This blast was not detonated by MCC. The complainant was contacted and informed that MCC did not blast at this time.
10/03/2025	Email	Blasting	A complaint was received by the EPA regarding the assumption that two blasts were detonated by MCC on the 7th March. The complaint related to dust and noise.	MCC only blasted on one occasion on the 7th March. MCC provided the requested information to the EPA, showing compliance with the operating conditions.





**EPL 20221 Monitoring Locations - 06/12/2023**

-  EPL Monitoring Locations
-  MCCM Project Boundary MOD 9

Scale: 1:33,944,857,333

Author: EGibson

Date created: 18/03/2025

Spatial Reference  
Name: WGS 1984 Web Mercator Auxiliary  
Sphere

**Maules Creek Coal**

